

# MonoPaq

## *the monoblock oven profiling solution*

**The Datapaq® MonoPaq is a customized oven profiling system designed specifically for monitoring the external coating cure process of aluminum bottles, aerosols and collapsible tubes in a monoblock oven.**

Combining state-of-the-art Q18 data logger with a custom designed thermal barrier and mounting bracket, the Datapaq® MonoPaq system travels directly on the pin chain through the complete process. Up to 6 thermocouples can be attached to the external surface of the product (tube or bottle), accurately measuring the surface and/or air temperatures at defined intervals, which are then stored in the memory of the data logger. Post run, the data is transferred to the laptop or PC where the Datapaq Insight™ analysis software can review, analyze and report on the thermal profile. Such information can be essential to achieve cure quality and maximize the efficiency of the entire coating process.

### HOW CAN YOU BENEFIT?

#### Improve quality by confirming and controlling cure

- Prove that every product experiences the specified time at temperature for satisfactory primer and decorative print cure
- Eliminate temperature spikes that can cause coating damage, print discoloration and substrate damage

#### Rapid fault finding

- Identify problems within the oven, such as cold spots quickly and efficiently
- Early identification of potential faults, such as blocked ducting, leaky burner box, faulty fan, etc., allowing time for rapid corrective action

#### Process Optimization

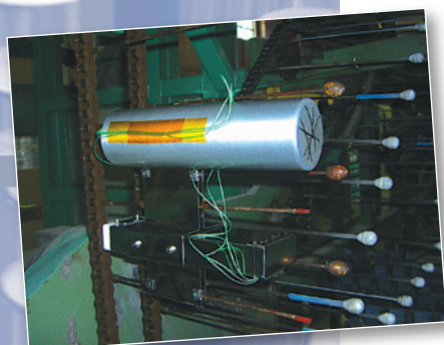
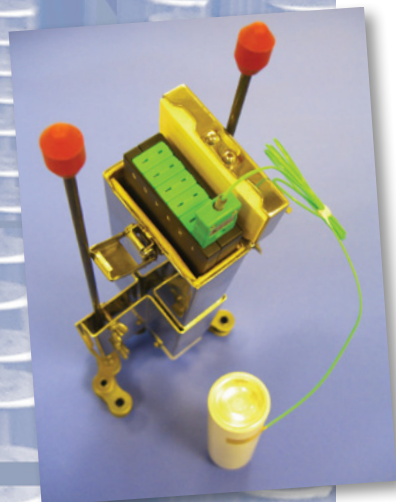
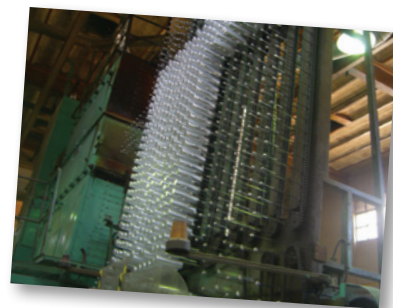
- Optimize operating characteristics for each product to maximize productivity (line speed) and fuel economy

#### Validation

- Create documentary proof of process control for use with customers or quality audits (ISO9000 etc.)

### MONOPAQ SYSTEM FEATURES

- Custom system fits quickly, easily and securely onto pin chain
- Lightweight and compact thermal barrier provides excellent protection from the process environment
- Thermal barrier mount bracket allows smooth transition of MonoPaq system throughout the process, even around tight chain radii
- 6 channel logger samples rapidly at a max 0.05 second intervals, giving high profile resolution and measurement accuracy
- Logger compatible barriers used in other monoblock thermal processes (eg: internal lacquer cure 'IBO')
- Insight™ software makes data interpretation and reporting easy and efficient

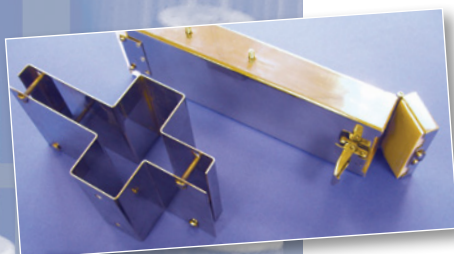


# TECHNICAL SPECIFICATIONS

## Q18 DATA LOGGER



<b>Model:</b>	DQ1862
<b>Channels:</b>	6 type K thermocouples
<b>Dimensions (H x W x L):</b>	20 mm x 57 mm x 165 mm (0.7 in x 2.2 in x 6.4 in)
<b>Sample Interval:</b>	0.05 seconds to 10 minutes
<b>Accuracy:</b>	±0.5°C (±0.9°F)
<b>Resolution:</b>	0.1°C (0.2°F)
<b>Maximum Internal Operating Temperature:</b>	85°C (185°F)
<b>Measurement Range:</b>	-200°C to 1370°C (-328°F to 2498°F)
<b>Memory:</b>	18,000 readings per channel
<b>Battery:</b>	NiMH rechargeable (2 hours)
<b>Battery Life:</b>	60 hours (sample interval 5 seconds @ 25°C / 77°F)

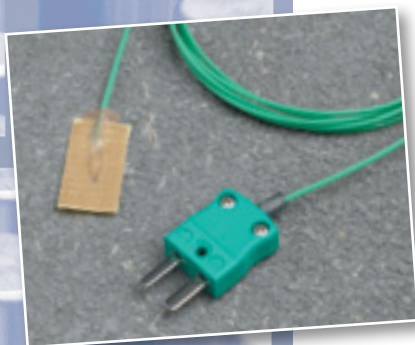


## THERMAL BARRIER AND FIXING BRACKET

<b>Model:</b>	TB0067
<b>Weight:</b>	1.0 kg (2.2 lb)

### Thermal Barrier (TB0060)

<b>Construction:</b>	Stainless steel with microporous insulation
<b>Dimensions (H x W x L):</b>	220 mm x 75 mm x 45 mm (8.6 in x 2.9 in x 1.7 in)
<b>Protection:</b>	200°C (400°F) for 6 minutes + 1.5 minutes cooling



### Thermal Barrier (TB0061)

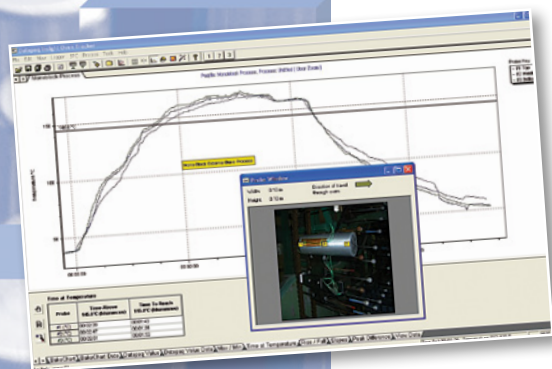
<b>Dimensions (H x W x L):</b>	80 mm x 75 mm x 160 mm (3.1 in x 2.9 in x 6.2 in)
to fit:	pin diameter 5 mm (.19 in)
	pin spacing 95 to 125 mm (3.7 in to 4.9 in)
	minimum radius 74 mm (2.9 in)

## THERMOCOUPLES

Fast response PTFE coated thermocouple attaches to product with high temperature adhesive tape. Capable of measuring 0°C to 265°C (32°F to 509°F).

<b>PA0060</b>	1.5 m (5 ft)
<b>PA0061</b>	1.0 m (3 ft)
<b>PA0062</b>	3.0 m (10 ft)

Fast response glass fiber cables available on request rated up to 500°C (932°F).



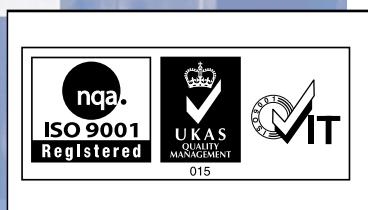
## SOFTWARE

Oven Tracker® Insight™ analysis software allows comprehensive data review, analysis and reporting.

Includes:

- Simple Wizard operation
- Datapaq Value, Reference and Tolerance Curves, SPC (Statistical Process Control), BakeChart analysis and Operator Mode
- Analysis Alarms
- Comprehensive Reporting, direct E-mail communication
- Local language available (please contact Datapaq for details)

The Worldwide Leader in Temperature Profiling



**OneTemp<sup>®</sup>** pty ltd  
measure | control | record  
**1300 768 887**  
[www.onetemp.com.au](http://www.onetemp.com.au)



© 2011 Datapaq (MonoPaq Rev B) 3/2011  
Datapaq and the Datapaq logo  
are registered trademarks of Datapaq.  
Specifications subject to change without notice.