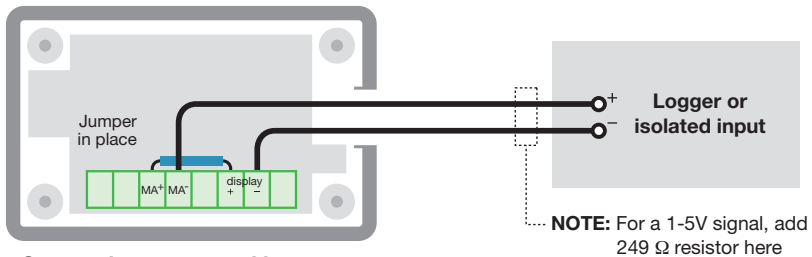
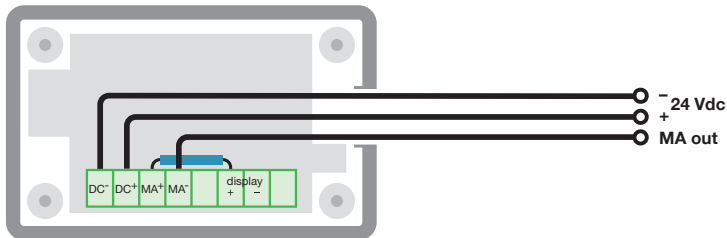


## 5. Wiring the Milliamp Output



Current loop powered by meter

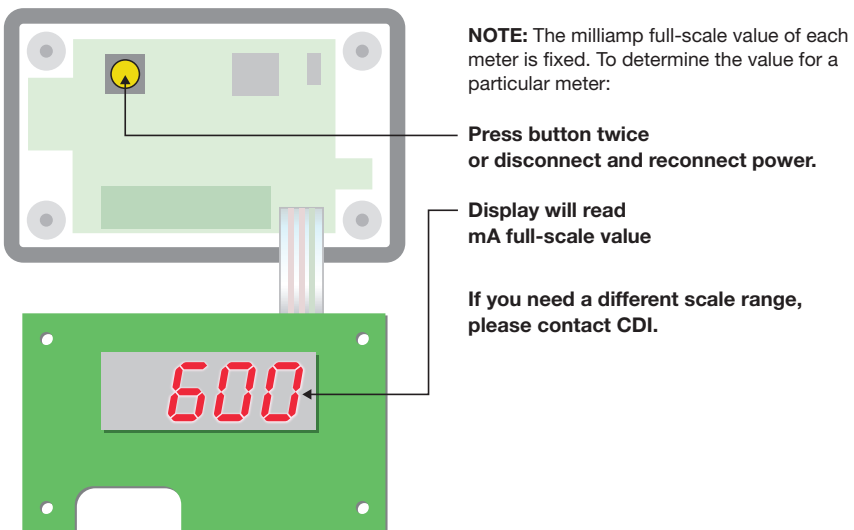


Connection as three-wire transmitter

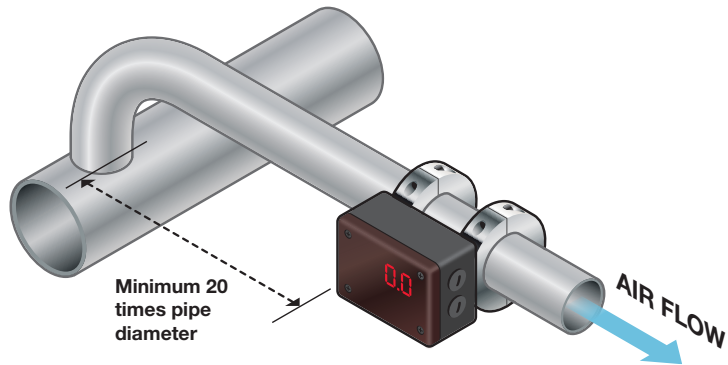
## Installation and Startup Guide for CDI 5200 and 5400 Flowmeters

Please refer to the data sheets for more detailed instructions.

## 6. Milliamp Scaling

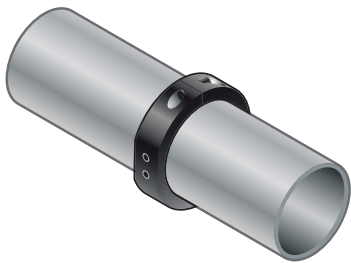


## 1. Meter Location

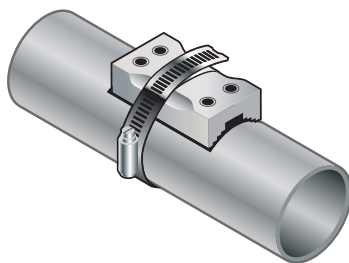


- Maximum pressure is 200 psi in Sch. 40 steel and Type L Copper. Consult CDI about other applications.
- Air must be free of water droplets. Locate the meter downstream of a dryer.
- Provide at least 20 diameters of straight pipe upstream of the meter, or 30 if it is downstream of anything that could distort or concentrate the flow.

## 2. Drilling the Holes



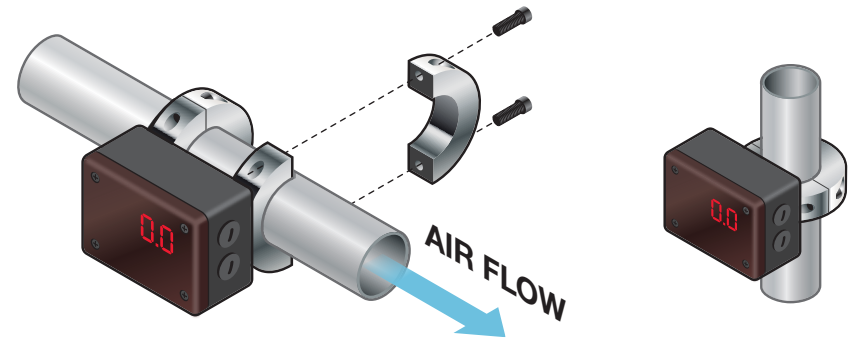
Half-Ring Drill Guide



Universal Drill Guide  
with Band Clamp

- Air *must* be shut down.
- Wear eye protection.
- Shavings will enter pipe; make sure they will not cause problems downstream.
- Orient the drill guide for optimal meter visibility.

## 3. Mounting the Meter



- Check the flow direction.
- Orient display to suit application – rotate cover and display 180 degrees if appropriate.
- Do not over-tighten screws.

## 4. Powering the Meter

