

# Excelog 6

## 6 Channel Handheld Temperature Data Logger with Touch Screen



- 4 x thermocouple inputs and 2 x RTD inputs
- Display and log all 6 channels simultaneously or individually
- Data logging to SD Card, or PC via USB interface
- Powered by built-in battery, USB or mains adapter (included) Touch screen with backlight
- Built-in stand
- Free software available
- Modbus interface for integration into third-party software
- 2-channel scrolling temperature chart
- Alarm indication for each channel
- CE Marked and RoHS 2 Compliant

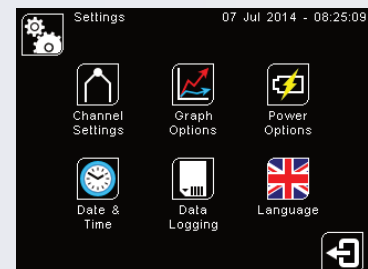
### GENERAL SPECIFICATIONS

<b>Inputs</b>	4 x thermocouple inputs (any of the below types), for use with miniature thermocouple connectors, plus 2 x RTD inputs, spring clamp, for 2-wire or 3-wire RTDs, 28 to 16 AWG	
<b>Input Type</b>	<b>Temperature Range</b>	<b>Accuracy of Excelog only (whichever is greater)</b>
<b>Thermocouples:</b>		
Type J	-200°C to 1200°C	± 0.1% or 0.8°C
Type K	-200°C to 1372°C	± 0.1% or 0.8°C
Type T	-200°C to 400°C	± 0.1% or 0.8°C
Type R	0°C to 1768°C	± 0.1% or 0.8°C
Type S	0°C to 1768°C	± 0.1% or 0.8°C
Type N	0°C to 1300°C	± 0.1% or 0.8°C
Type E	-200°C to 1000°C	± 0.1% or 0.8°C
<b>RTDs:</b>		
Pt100, Pt200, Pt500, Pt1000	-200°C to 850°C	± 1.0% or 1.0°C
<b>Temperature Resolution</b>	0.1° for temperatures below 1000° (C or F) 1° for temperatures above 1000° (C or F)	
<b>Display</b>	2.83" (72 mm) resistive touch TFT, 320 x 240 pixels, backlit	
<b>Configurable Parameters</b>	Temperature units, alarms, signal processing, date and time, data logging, power options, graph channels	
<b>Temperature Units</b>	°F or °C	
<b>Alarm Configuration</b>	12 x visual alarms (2 per channel) with adjustable level, individually configurable as HI or LO.	
<b>Signal Processing</b>	Average, minimum, maximum, standard deviation, temperature difference between 2 channels	
<b>Display response time</b>	Temperatures update every 1 s	
<b>Operating Temperature</b>	0 to 50°C	
<b>Power Supply</b>	Built-in rechargeable Li-ion battery, or USB, or 5 V DC mains adapter (included)	
<b>Battery Life (typical)</b>	32 hours while logging with full display brightness Up to 96 hours while logging in power saving mode	
<b>Charge Time</b>	6 hours (with supplied mains adapter)	
<b>Weight</b>	200 g	
<b>Dimensions</b>	136(w) x 71(h) x 32(d) mm	

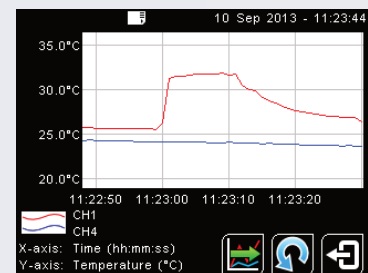
### DATA LOGGING SPECIFICATIONS

<b>Data Logging Interval</b>	1 to 86,400 seconds (1 day)
<b>Max. SD Card Capacity</b>	32 GB SD or SDHC (4 GB SD Card included - approx 2 years of data)
<b>Variables Logged</b>	Measured temperature, cold junction temperature, alarm events
<b>File Format</b>	.csv (can be imported to Excel)
<b>Configurable Parameters</b>	Sample period, number of samples, scheduled start date/time (or manual start/stop)

### INTERFACE



- Intuitive touch screen interface
- English, Spanish, French, German, Italian, Chinese and Japanese languages
- Fully configurable; no additional hardware is required for configuration
- Each channel is configurable separately for input type, maths, alarms and display options
- Firmware updates via USB



#### Temperature Graph

Two selectable channels are displayed. Scroll back in time to view chart history.

### MODEL NUMBERS

<b>EXCELOG-6</b>	6-channel data logger with 4 GB SD Card, USB cable and 5 V DC mains adapter
------------------	---

### ACCESSORIES

<b>ELMAU</b>	Spare mains adapter
<b>ELSD</b>	Spare 4 GB SD Card
<b>ELCALCERT</b>	Calibration certificate, UKAS traceable