

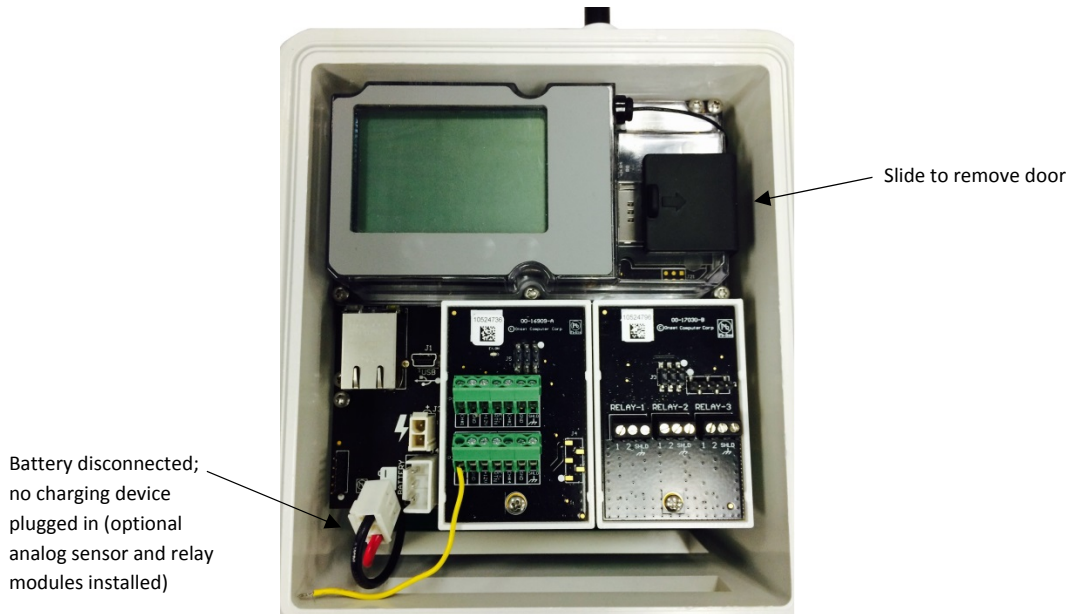
# Installing a SIM Card in a HOBO® RX3003 Remote Monitoring Station

## Requirements:

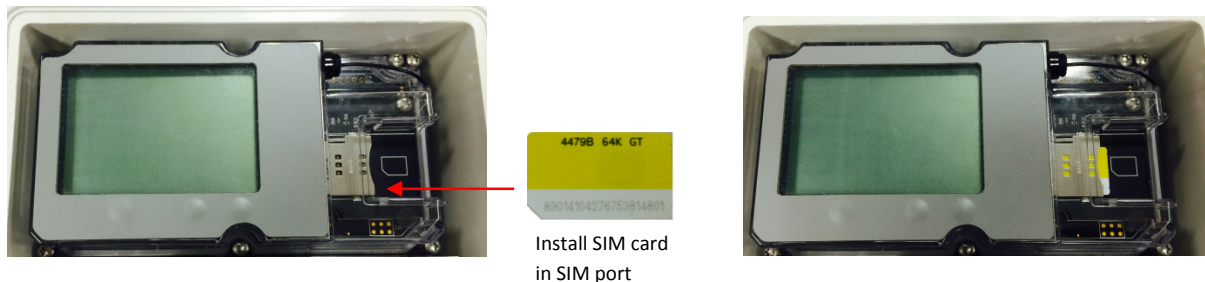
- HOBO RX3003 Remote Monitoring Station
- USB cable
- HOBOware® 3.7.2 or higher
- User-provided 3G data plan and SIM requirements:
  - Standard size SIM for 3G Cellular Network
  - Support UMTS/HSPA+ at 800, 850, 900, 1900, or 2100 MHz
  - The SIM must already be activated and unlocked
  - APN for the associated carrier

## To install a SIM card in the RX3003 Station:

1. Make sure the station is powered down. Disconnect the battery and unplug any charging device, such as AC adapter or solar panel.
2. Use the tab to slide and remove the protective door to the right of the LCD.



3. Carefully slide the SIM card into the SIM port and gently push it into place (you will hear a click when it is properly seated).



4. Press the protective door back in place.
5. Plug in the battery and any charging device. "Initializing System" will blink on the LCD while the system powers up. Wait until "System" appears with a checkmark.

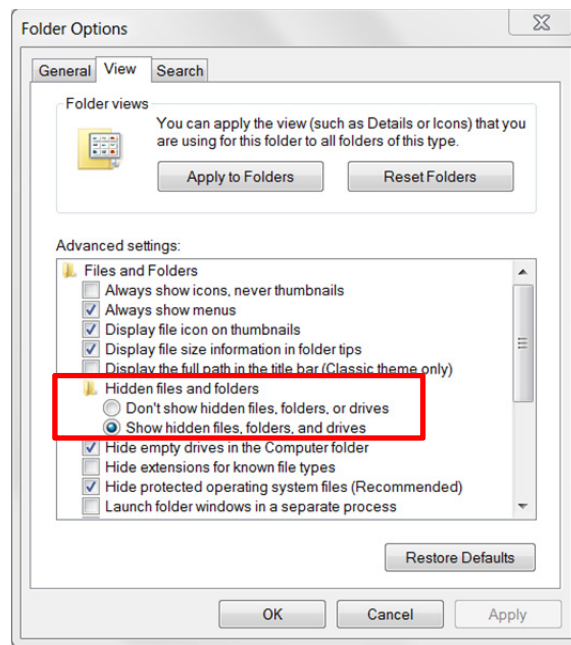
6. Connect the station to the computer with a USB cable. It may take a few minutes for the device driver to be installed on Windows® if this is the first time connecting the device to the computer.
7. Make sure HOBOWare is closed.
8. Open the HOBOWare properties file (app.properties).

On Macintosh®, use Finder to right-click HOBOWare and choose Show Package Contents. Click Contents, then Resources, then Java. Open app.properties in TextEdit or a similar text editor.

On Windows, go to c:\ProgramData\Onset Computer Corporation\HOBOWare and open app.properties in Notepad or a similar text editor.

If you do not see this directory on Windows, you may need to show hidden files and folders. To do this:

- a. Click the Start button and open the Control Panel.
- b. On Windows 8, click Appearance and Personalization and then Folder Options.  
On Windows 7, click Folder Options.
- c. Click the View Tab.
- d. Under Advanced settings, click “Show hidden files and folders” or “Show hidden files, folders, and drives” and then click OK.



9. In the app.properties file, look for the two settings “hoboware.enable.dealer” and “hoboware.enable.setapn” as circled below.

```

app.properties - Notepad
File Edit Format View Help
hoboware.LogLevel=0
hoboce.LogLevel=0
hoboware.DbM=off
hoboware.DevM=off

hoboware.USBReadTimeout=0
hoboware.webservices.url=https://webservice.hobolink.com/axis2/services/
hoboware.webupdates.test.url=http://www.onsetcomp.com/hoboware/index.php?
hoboware.enable.hobonode=on_auth12
hoboware.show.hobonode.debug=off

hoboware.enable.dealer = off
hoboware.enable.setapn=off
hoboware.enable.sethostip = off

hoboware.data.factory=IMP_DISK_CACHE
hoboware.data.numblocks=10
hoboware.data.channelspercache=4
hoboware.data.cachemanager=SINGLETON

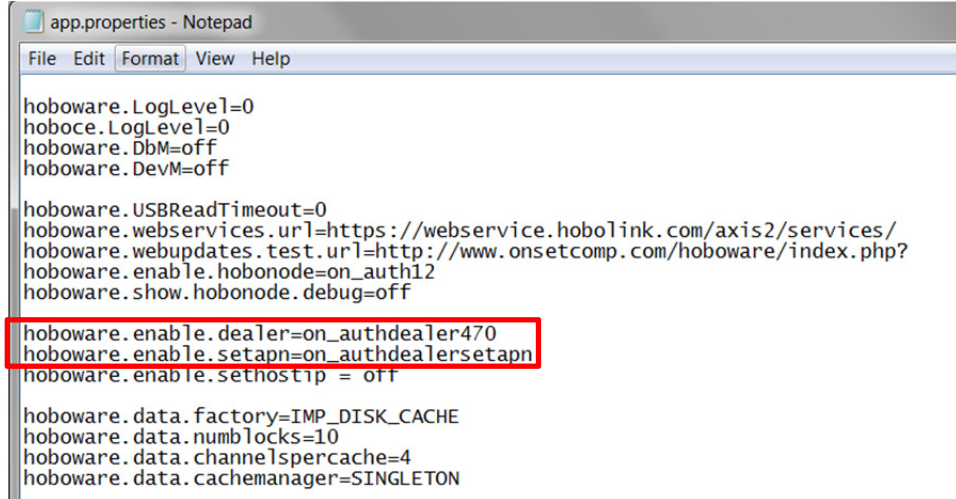
```

- For `hoboware.enable.dealer = off`, replace “off” with “on\_authdealer470”.

For `hoboware.enable.setapn = off`, replace “off” with “on\_authdealersetapn”.

The two lines should read as follows (as circled in the example below):

```
hoboware.enable.dealer=on_authdealer470
hoboware.enable.setapn=on_authdealersetapn
```



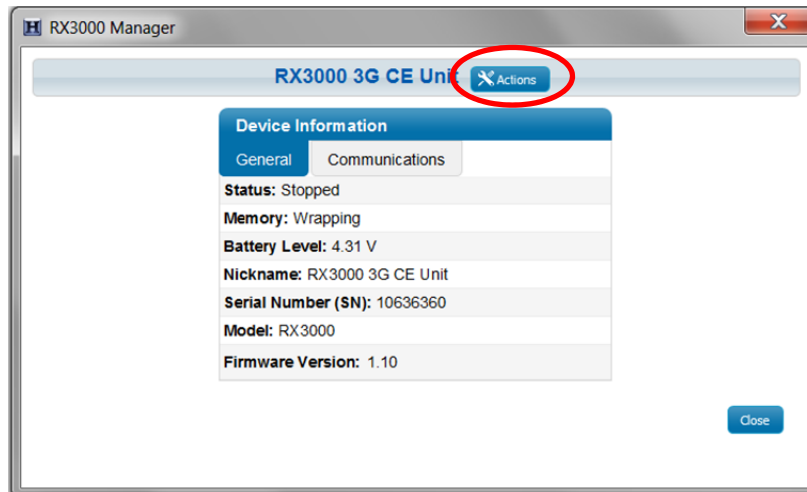
```
app.properties - Notepad
File Edit Format View Help

hoboware.LogLevel=0
hoboce.LogLevel=0
hoboware.DbM=off
hoboware.DevM=off

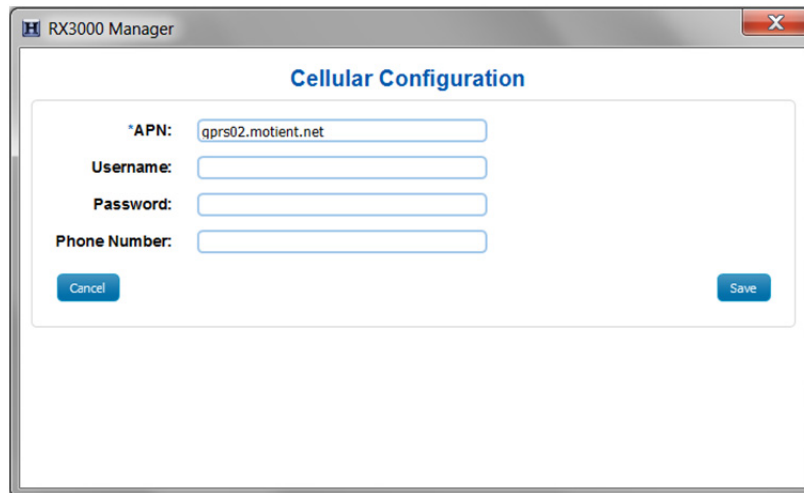
hoboware.USBReadTimeout=0
hoboware.webservices.url=https://webservice.hobolink.com/axis2/services/
hoboware.webupdates.test.url=http://www.onsetcomp.com/hoboware/index.php?
hoboware.enable.hobonode=on_auth12
hoboware.show.hobonode.debug=off
hoboware.enable.dealer=on_authdealer470
hoboware.enable.setapn=on_authdealersetapn
hoboware.enable.sethostip = off

hoboware.data.factory=IMP_DISK_CACHE
hoboware.data.numblocks=10
hoboware.data.channelspercache=4
hoboware.data.cachemanager=SINGLETON
```

- Save the `app.properties` file.
- Open HOBOWare.
- From the Device menu, select Manage RX3000.
- In the RX3000 Manager, click the Actions button circled below.



15. Enter the APN for the SIM card. You can also enter a username, password, and phone number as needed.



The image shows a screenshot of the 'RX3000 Manager' software window. The title bar reads 'RX3000 Manager' and has a close button. The main content area is titled 'Cellular Configuration'. It contains four input fields: 'APN:' with the value 'qprs02.motient.net', 'Username:', 'Password:', and 'Phone Number:'. At the bottom of the dialog are two buttons: 'Cancel' on the left and 'Save' on the right.

16. Click Save and then click Done.
17. Click Close in the RX3000 Manager.
18. Disconnect the USB cable from the station. It should now be ready to connect with HOBOLink®. Refer to the HOBOLink® RX3000 Remote Monitoring Station Manual at [www.onsetcomp.com/manual/rx3000](http://www.onsetcomp.com/manual/rx3000) for details on setting up and configuring the station.