



A Fluke Company

# WicketPaq

## the three piece can profiling solution



The DataPaq® WicketPaq system is a customized profile system designed specifically for temperature monitoring of wicket ovens in the manufacturing of three piece cans.

With the WicketPaq system, a profile of metal sheet and environmental temperatures can be collected to confirm either print ink or lacquer cure with the Wicket oven.

Designed to clip onto a sheet traveling through the oven, the whole system and test sheet can be installed quickly and easily without disturbing a production run or altering the oven operating conditions.

Using fast response thermocouples, accurate product temperature can be monitored to confirm correct cure of print ink or lacquer critical to product quality. Positioning probes over the surface area of the sheet allows temperature balance within the oven and insures uniform curing over the sheet.

Collect the profile temperature data and with the DataPaq Insight™ analysis software, convert it into useful information. Such information can be used to not only guarantee product quality, but allow optimization of the cure process to maximize productivity and profitability.

### SYSTEM FEATURES

- WicketPaq clips directly to sheet
- Lightweight/compact
- Fully programmable sample interval and start trigger
- Fast response adhesive patch probes
- Powerful DataPaq Insight™ software

### SYSTEM BENEFITS

#### Prevent Under or Over Cure Problems:

- Reaction of can contents (foods) with metal substrate – food contamination, tainting of taste, leakage etc.
- Damage to decorative external print
- Annealing of Aluminum substrate (>220°C / 428°F), which can weaken the can
- Discoloration of print inks (whites to yellow and reds to brown)

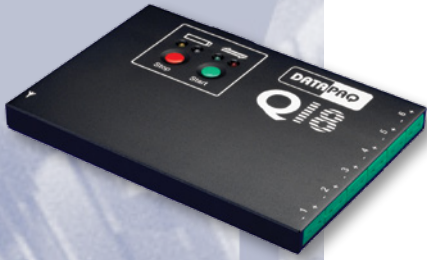
#### Process Improvement:

- Optimize operating characteristics to maximize productivity (line speed) and fuel economy
- Identify problems within the oven, such as cold spots, quickly and efficiently. Identify the potential cause of problems (blocked ducting, leaky burner box, faulty fan, etc.), allowing for rapid corrective action.
- Create documentary proof of process control for use with customers or quality audits (ISO9000 etc.)
- Employ SPC facilities to identify gradual changes in operating characteristics, so preventative maintenance can be scheduled before product quality is affected
- Identify regions of excessive turbulence, which may cause problems with sheet marking / ghosting



# TECHNICAL SPECIFICATIONS

## Q18 DATA LOGGER



<b>Model:</b>	DQ1860
<b>Number of Channels:</b>	6
<b>Sample Interval:</b>	0.05 seconds to 10 minutes
<b>Accuracy:</b>	±0.5°C (±1°F)
<b>Resolution:</b>	0.1°C (0.9°F)
<b>Maximum Internal Operating Temperature:</b>	85°C (185°F)
<b>Temperature Range:</b>	-200°C to 1370°C (-328°F to 2498°F)
<b>Memory:</b>	18,000 readings per channel
<b>Data collection start:</b>	Start/Stop buttons, time or temperature trigger
<b>Thermocouples:</b>	Type K
<b>Battery:</b>	NiMH rechargeable
<b>Battery Charging:</b>	Full charge in less than 2 hours
<b>Battery Life:</b>	60 hours (Sample interval of 5 seconds @ 25°C / 77°F)

## THERMAL BARRIERS



TB0045 Thermal Barrier



TB0046 Thermal Barrier

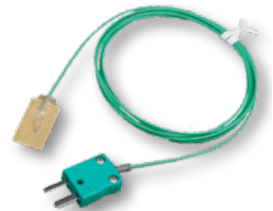
Barrier Model	TB0045	TB0046*			
<b>Weight</b>	1.5 kg (3.3 lb)	2.5 kg (5.5 lb)			
<b>Dimensions (H x W x L)</b>	48 mm x 185 mm x 233 mm (1.8 in x 7.2 in x 9.1 in)	70 mm x 172 mm x 240 mm (2.7 in x 6.7 in x 9.4 in)			
<b>Suitable Logger</b>	DQ1860	DQ1860			
<b>Temperature</b>	100°C (212°F)	150°C (302°F)	200°C (392°F)	250°C (482°F)	300°C (572°F)
<b>TB0045 Duration (minutes)</b>	80	45	35	30	–
<b>TB0046 Duration (minutes)</b>	120	60	45	35	25

\*Clip not provided as standard, but optional. Fitted with locking carry handle.

## THERMOCOUPLES

Fast response PTFE coated thermocouple attaches to test sheet with high temperature adhesive tape. Capable of measuring 0°C to 265°C (32°F to 509°F)

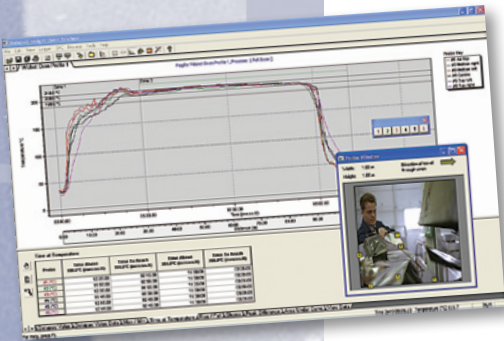
<b>PA0060</b>	1.5 m (5 ft)
<b>PA0061</b>	1.0 m (3 ft)
<b>PA0062</b>	3.0 m (10 ft)



## SOFTWARE FEATURES

Oven Tracker® Insight™ analysis software allows comprehensive data review, analysis and reporting and includes:

- Simple Wizard operation
- Datapaq Value, Reference and Tolerance Curves, SPC (Statistical Process Control), BakeChart analysis
- Analysis Alarms, plus much more
- Other local languages available (please contact Datapaq for details)



## The Worldwide Leader in Temperature Profiling



**Europe and Asia**  
 DATAPAQ Limited,  
 Deanland House, 160 Cowley Road,  
 Cambridge CB4 0GU, UK  
 Tel: +44 (0) 1223 423 141  
 Fax: +44 (0) 1223 423 306  
 E-mail: sales@datapaq.co.uk  
 Web: www.datapaq.com

**North and South America**  
 DATAPAQ Inc.,  
 187 Ballardvale Street,  
 Willimington, MA 01887, USA  
 Tel: +1 978 988 9000  
 Fax: +1 978 988 0666  
 E-mail: sales@datapaq.com  
 Web: www.datapaq.com

**Germany**  
 DATAPAQ GmbH,  
 Valdorfer Straße 100  
 D-32602 Vlotho, Deutschland  
 Tel: +49 5733 9107 0  
 Fax: +49 5733 9107 27  
 E-mail: sales@datapaq.de  
 Web: www.datapaq.de



www.datapaq.com

©2011 Datapaq (WicketPaq Rev B) 3/2011  
 Datapaq, the Datapaq logo and Oven Tracker  
 are registered trademarks of Datapaq.  
 Specifications subject to change without notice.