

# CYCLOPS

## LOGGER SOFTWARE

AMETEK LAND HAS BEEN MANUFACTURING PRECISION MEASURING EQUIPMENT SINCE 1947. WE ARE SPECIALISTS IN NON-CONTACT TEMPERATURE MEASUREMENT AND COMBUSTION MONITORING WITH APPLICATIONS ACROSS DIVERSE INDUSTRIES SUCH AS STEEL AND GLASS MAKING, POWER GENERATION AND CEMENT MANUFACTURE.

As part of AMETEK Process & Analytical Instruments Division since 2006, our customers benefit from the worldwide AMETEK sales and service team.

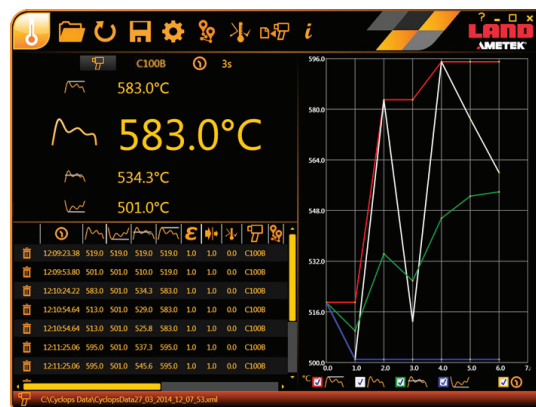
The AMETEK Land Cyclops Logger Software delivers an enhanced Cyclops user experience.

Using either a PC or mobile device, the software allows users to view, analyze and save Cyclops L portable thermometer measurement data..

The Logger software is compatible with all Cyclops L and Cyclops B models.

Connection between the software and the Cyclops can be either via wireless (Bluetooth®) or USB (Cyclops L models only).

Cyclops Logger Software is available for FREE from [www.landinst.com/software-downloads](http://www.landinst.com/software-downloads)



Measurement screen with instant temperature, a table view with list of recent measurements, plus a trend view of the same readings.

## FEATURES & BENEFITS

FEATURE	CYCLOPS B	CYCLOPS B with Mobile Device	CYCLOPS L	CYCLOPS L with Mobile Device
Data Storage	X	✓ Mobile Device	✓ Internal	✓ Internal or Mobile Device
Route Navigation	X Paper list to record measurement and location	X	✓ Stores data to fixed internal memory locations	✓ Detailed location info Add/Config routes
Location Specific	X	X	✓ Emissivity Window Correction	✓ E/W and background compensation
Live Data Analysis	X	✓ Trend of Statistics Edit data during route	X	✓ Trend of Statistics Edit data during route
Semi Fixed Installation	X	X	✓	✓

**Unique Route Management Mode** - An ideal tool for sites with multiple locations requiring regular and reliable monitoring; pre-configured settings including emissivity and window correction for each location

**Internal Data Logging** - the Cyclops L thermometer stores up to 9999 temperature measurements; all measurements can be downloaded to the logger software for further analysis and comparison

**Remote Trigger** - take measurements remotely using either a PC or mobile device

**Record Live Temperature Measurements** - store, view and analyze using the logger software

**Choice of Measurement Modes** - Instantaneous, Peak, Valley, Average plus Meltmaster on the Cyclops 055 B and L models

**Background Temperature Compensation** - allows for accurate non-contact temperature measurements by compensating for the background temperature of the target



# CYCLOPS

## LOGGER SOFTWARE

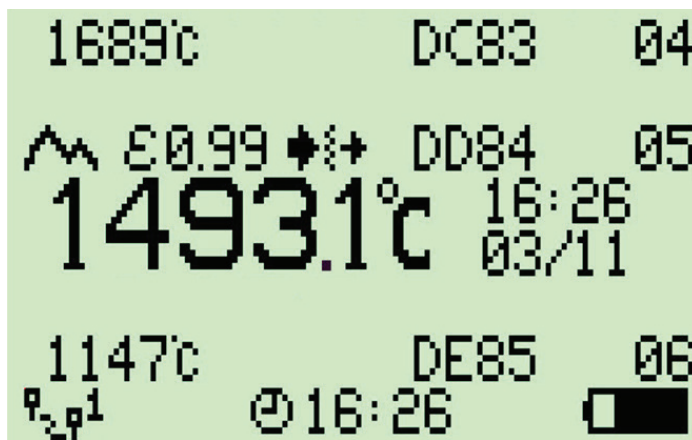
The Cyclops Logger software unique Route Mode provides configurable measurement routes for your plant or process. This feature is particularly useful if you have multiple locations on your plant or process which you need to monitor on a regular basis. You can configure a route in the Logger software which incorporates a sequence of these locations, and take measurements in a predetermined order at the locations indicated. Send these routes/locations to the thermometer via Bluetooth® or USB connector.

- **All routes are created in the Logger software** - routes are uploaded to the Cyclops via Bluetooth® or USB
- **A single Route can have up to 99 locations for measurement** - capability for even the largest plant or multiple plants
- **Each Location on a route can be identified by the following information: description, target emissivity, and window correction factor** - simple to take consistent measurements
- **Pre-configure emissivity and window correction at each location** - no need to change the Cyclops settings at each location, meaning repeatable, reliable readings
- **Making the Cyclops more accessible** - A new user simply follows the routes/locations previously configured in the Logger software
- **Save the individual measurements to export as either a CSV or XML format (re-use later)** - complete flexibility over data capture



### Route Management requires three simple steps.

- 1. Create a Route** - creating a route requires one button click.
- 2. Add location** - Select the route and add a location:
  - Description of the location;
  - Emissivity value for the target being measured at the location;
  - A window correction factor (if applicable), for locations where the target is being viewed through a window or viewing port;
- 3. Upload to the Cyclops** - Once routes have been defined they can be uploaded to the Cyclops L. The thermometer can store up to 9 routes internally that can be easily navigated using the instrument side panel.



**LAND**  
**AMETEK®**

**Land Instruments International**  
Stubley Lane, Dronfield  
S18 1DJ  
United Kingdom

Tel: +44 (0) 1246 417691  
Email: [land.enquiry@ametek.com](mailto:land.enquiry@ametek.com)  
[www.landinst.com](http://www.landinst.com)

**AMETEK Land - Americas**  
150 Freeport Road,  
Pittsburgh, Pennsylvania, 15238  
United States of America

Tel: +1 (412) 826 4444  
Email: [land.enquiry@ametek.com](mailto:land.enquiry@ametek.com)  
[www.ametek-land.com](http://www.ametek-land.com)

**AMETEK Land China Service**  
Part A1 & A4, 2nd Floor Bldg. 1  
No. 526 Fute 3rd Road East,  
Pilot Free Trade Zone 200131  
Shanghai, China

Tel: +86 21 5868 5111 ext 122  
Email: [land.enquiry@ametek.com](mailto:land.enquiry@ametek.com)  
[www.landinst.com](http://www.landinst.com)

**AMETEK Land India Service**  
Divyasree N R Enclave, Block A,  
4th Floor, Site No 1, EPIP Industrial Area  
Whitefield, Bangalore- 560066  
Karnataka, India

Tel: +91 - 80 67823240  
Email: [land.enquiry@ametek.com](mailto:land.enquiry@ametek.com)  
[www.landinst.com](http://www.landinst.com)