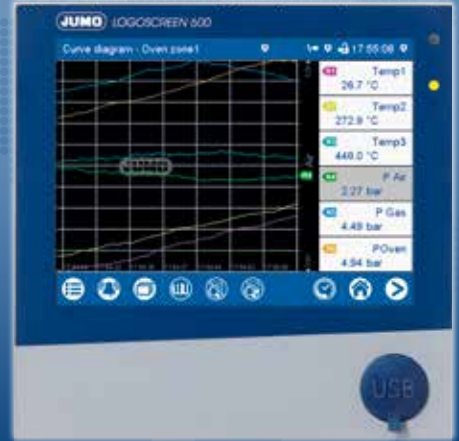




More than **sensors + automation**

M
1GBMEMORY
U
ETHERNET
T
I
INTUITIVE
G
D
TOUCHSCREEN
P
T
H119MM

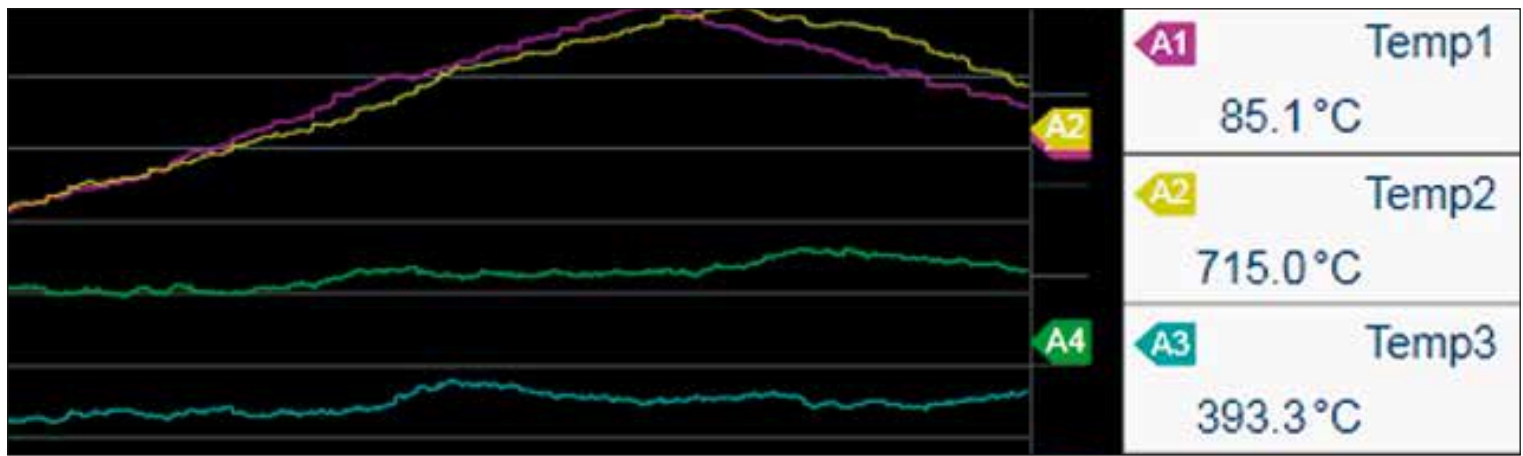


JUMO LOGOSCREEN 600

Touching the future of recording: The new paperless recorder

OneTemp^o pty ltd
MEASURE | CONTROL | RECORD
www.onetemp.com.au
1300 768 887





The new generation

The JUMO LOGOSCREEN 600 paperless recorder is the new starter model in the LOGOSCREEN range, which has proven itself in actual use for many years. It sets standards for user-friendliness and performance with its revised operation and visualization concept based on symbols along with features which are unusually easy-to-use for a basic device.



Touching the future of recording: The new JUMO LOGOSCREEN 600.

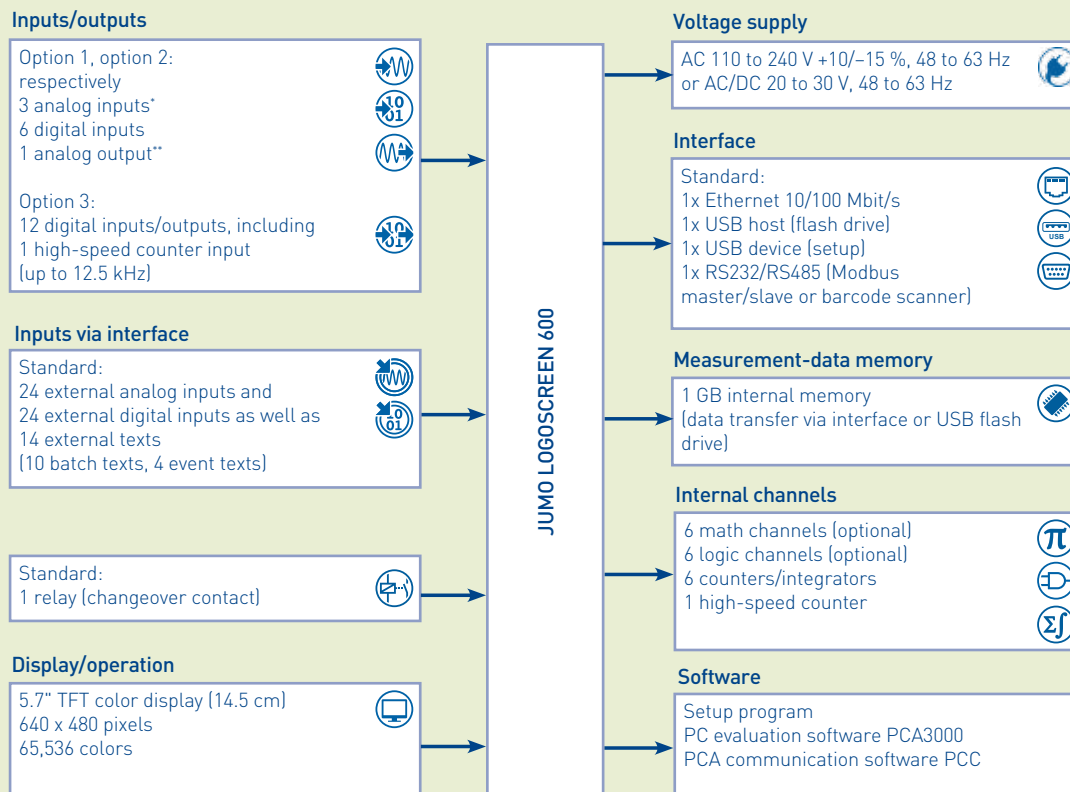
Your benefits in a nutshell:

- Simple operation via intuitive user interface and touchscreen
- High performance capabilities: large data memory (1 GB) and Ethernet connection
- Individual design options for customer-specific applications
- Online-visualization: integrated web browser with process screen display
- Always up-to-date: process values displayed on smartphone and tablet via app
- High level of interface flexibility via Modbus master function
- Quick response capacity with 125 ms sampling rate

Features

- Exceptional 5,7"-TFT color display
- Intuitive touch operation
- Low mounting depth (119 mm)
- Up to 6 universal measurement inputs, up to 2 analog outputs
- Up to 24 external analog and digital measuring channels respectively
- Customer-specific process screens (max. 6)
- Counters and integrators (6 channels)
- Math and logic module (6 channels each)
- Integrated web server, 1 GB internal memory
- Horizontal or vertical line graph
- Batch report recording
- Powerful evaluation software and setup program as accessories
- Lifecycle data management
- Protection type IP65

Block diagram



* Configurable for RTD temperature probe, resistance transmitter, resistor, potentiometer, thermocouples, current 0(4) to 20 mA, voltage -10 to +10 V.

** Configurable as current output 0(4) to 20 mA or voltage output 0 to 10 V.



Find what you want in three steps – intuitive touch operation

Symbol menu system

The JUMO LOGOSCREEN 600 can be used almost intuitively with the menu system based on symbols. As standard, the user has a choice of user language between English, German, French, and Spanish. Individual language versions can also be created with the setup program.

Language-neutral support via almost self-explanatory symbols offers the user a completely new operating experience.



Increased usability through the use of language-neutral symbols

Operating concept

The operating concept is designed so that in the majority of cases the user can reach the goal destination with three touch operations. The display of the touch navigation system means that users have an overview of where they are at all times and can operate the paperless recorder without a detailed description of the operating concept.

Integrated user administration prevents unauthorized access. Up to five different user accounts with individual access rights can be created. The use of user profiles simplifies the administration of individual users.



View everything at once with the touch navigation system display

Individual design – visualization of measurement data thanks to professional device software

Data visualization

The JUMO LOGOSCREEN 600 offers various options for visualizing measurement data:

- Vertical and horizontal line graph
- Bar graph display
- Text image (numerical)
- Digital diagram
- Report display
- Batch report
- Process screen

The color for individual channels and for the background of diagrams with analog curves and digital tracks can be selected.



Horizontal line graph with black background and four digital tracks

Create personalized process screens

An attractive feature is that process screens can be used for visualization in the device even in the starter model. The user can create up to six individual process screens in the setup program without any advanced programming skills. These can comprise up to 100 objects (images, measured value fields, texts, etc.). Thanks to high resolution and color depth even the smallest details are displayed perfectly. A process screen generated in this way visualizes plant and process statuses which gives the user a particularly clear and complete impression of the plant.



Visualizing a plant: process screen of a malt drying kiln with integrated measured value display



Securely networked – interfaces and software for continuous data flow

Ethernet interface

The JUMO LOGOSCREEN 600 is equipped with an Ethernet interface as standard which supports the following functions:

- DHCP, HTTP, DNS device names
- Communication with the PC setup program
- Web server
- Automatic data read-out (PCC software)
- Email notification for up to five alarm events
- Time synchronization via SNTP
- Communication via Modbus/TCP

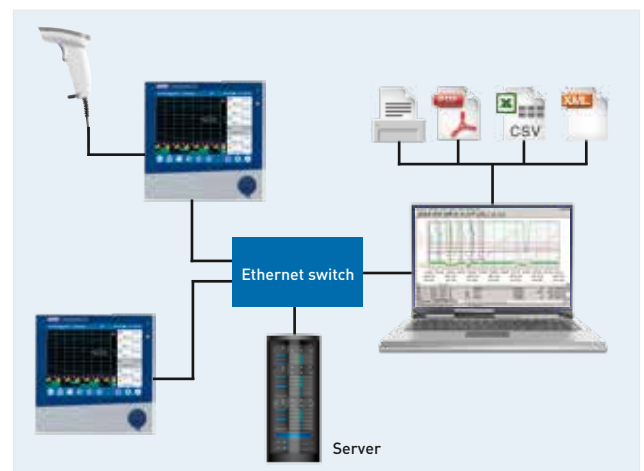
Networked batch reporting

The JUMO LOGOSCREEN 600 allows batch reports to be created for a plant. The touchscreen is used to enter batch texts as well as to start and stop a batch. Alternatively, data can also be transferred using a barcode scanner or an interface.

For batch evaluation, measurement data as well as the beginning, end, and duration of the batch along with a batch counter and batch texts can be displayed – either on the paperless recorder or with the PC evaluation software PCA3000. Using the "automatic printout" option in the evaluation software PCA3000, the user can – by using the PCC communication software – automatically print batch data / reports or to make them available as a PDF-file in a connected network. The output forms for this task can be customized.

current batch - oven 14.1	
Product name	Sprocket 18ZK2
Customer number	23565
Order number	A100012455
Employee	Alfred Lauer
Batch number	00000000024
Batch start	10.07.2015 13:34:25
Batch end	10.07.2015 13:35:28
Batch duration	01:04

Batch report display on the JUMO LOGOSCREEN 600



Networked batch reporting

Always up-to-date – data is easy to view online via web server and app

Web server

The JUMO LOGOSCREEN 600 paperless recorder is equipped with a web server function as standard. This function allows the user to display certain settings, process values, and messages using a web browser:

- Visualizations almost identical to device display
- Customized process screens
- Data of the recording function (including history)
- Alarm and event list

The user has worldwide access to the web server function and as a result travel costs can be reduced as a process evaluation can be performed from the office.



Online visualization in web browser

JUMODevice app

With the new JUMODevice app, the user can now also access process data on mobile devices. All current process values as well as alarm and event lists can be viewed in a textual display.

The JUMODevice app is available for Android and iOS in the respective app store.

Alternatively, the app can be downloaded for free using the following QR code:



Display of process values on smartphone and tablet



OneTemp[®] pty ltd
MEASURE | CONTROL | RECORD
www.onetemp.com.au
1300 768 887

www.jumo.net