



A Fluke Company

WicketPac

the three piece can profiling solution



The Datapac® WicketPac system is a customized profile system designed specifically for temperature monitoring of wicket ovens in the manufacturing of three piece cans.

With the WicketPac system, a profile of metal sheet and environmental temperatures can be collected to confirm either print ink or lacquer cure with the Wicket oven.

Designed to clip onto a sheet traveling through the oven, the whole system and test sheet can be installed quickly and easily without disturbing a production run or altering the oven operating conditions.

Using fast response thermocouples, accurate product temperature can be monitored to confirm correct cure of print ink or lacquer critical to product quality. Positioning probes over the surface area of the sheet allows temperature balance within the oven and insures uniform curing over the sheet.

Collect the profile temperature data and with the Datapac Insight™ analysis software, convert it into useful information. Such information can be used to not only guarantee product quality, but allow optimization of the cure process to maximize productivity and profitability.

SYSTEM FEATURES

- WicketPac clips directly to sheet
- Lightweight/compact
- Fully programmable sample interval and start trigger
- Fast response adhesive patch probes
- Powerful Datapac Insight™ software

SYSTEM BENEFITS

Prevent Under or Over Cure Problems:

- Reaction of can contents (foods) with metal substrate – food contamination, tainting of taste, leakage etc.
- Damage to decorative external print
- Annealing of Aluminum substrate (>220°C / 428°F), which can weaken the can
- Discoloration of print inks (whites to yellow and reds to brown)

Process Improvement:

- Optimize operating characteristics to maximize productivity (line speed) and fuel economy
- Identify problems within the oven, such as cold spots, quickly and efficiently. Identify the potential cause of problems (blocked ducting, leaky burner box, faulty fan, etc.), allowing for rapid corrective action.
- Create documentary proof of process control for use with customers or quality audits (ISO9000 etc.)
- Employ SPC facilities to identify gradual changes in operating characteristics, so preventative maintenance can be scheduled before product quality is affected
- Identify regions of excessive turbulence, which may cause problems with sheet marking / ghosting



TECHNICAL SPECIFICATIONS



Q18 DATA LOGGER

Model:	DQ1860
Number of Channels:	6
Sample Interval:	0.05 seconds to 10 minutes
Accuracy:	±0.5°C (±1°F)
Resolution:	0.1°C (0.9°F)
Maximum Internal Operating Temperature:	85°C (185°F)
Temperature Range:	-200°C to 1370°C (-328°F to 2498°F)
Memory:	18,000 readings per channel
Data collection start:	Start/Stop buttons, time or temperature trigger
Thermocouples:	Type K
Battery:	NiMH rechargeable
Battery Charging:	Full charge in less than 2 hours
Battery Life:	60 hours (Sample interval of 5 seconds @ 25°C / 77°F)



TB0045 Thermal Barrier



TB0046 Thermal Barrier

THERMAL BARRIERS

Barrier Model	TB0045		TB0046*		
Weight	1.5 kg (3.3 lb)		2.5 kg (5.5 lb)		
Dimensions (H x W x L)	48 mm x 185 mm x 233 mm (1.8 in x 7.2 in x 9.1 in)		70 mm x 172 mm x 240 mm (2.7 in x 6.7 in x 9.4 in)		
Suitable Logger	DQ1860		DQ1860		
Temperature	100°C (212°F)	150°C (302°F)	200°C (392°F)	250°C (482°F)	300°C (572°F)
TB0045 Duration (minutes)	80	45	35	30	—
TB0046 Duration (minutes)	120	60	45	35	25

*Clip not provided as standard, but optional. Fitted with locking carry handle.

THERMOCOUPLES

Fast response PTFE coated thermocouple attaches to test sheet with high temperature adhesive tape. Capable of measuring 0°C to 265°C (32°F to 509°F)

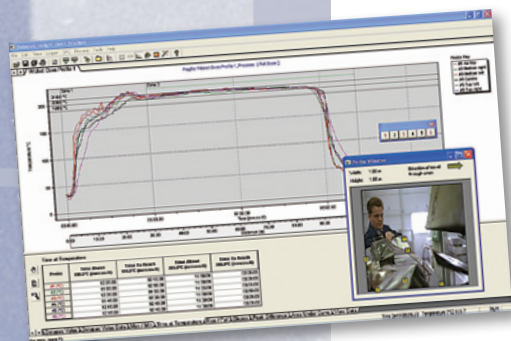
PA0060	1.5 m (5 ft)
PA0061	1.0 m (3 ft)
PA0062	3.0 m (10 ft)



SOFTWARE FEATURES

Oven Tracker® Insight™ analysis software allows comprehensive data review, analysis and reporting and includes:

- Simple Wizard operation
- Datapaq Value, Reference and Tolerance Curves, SPC (Statistical Process Control), BakeChart analysis
- Analysis Alarms, plus much more
- Other local languages available (please contact Datapaq for details)



The Worldwide Leader in Temperature Profiling



Europe and Asia
 DATAPAQ Limited,
 Deanland House, 160 Cowley Road,
 Cambridge CB4 0GU, UK
 Tel: +44 (0)1223 423 141
 Fax: +44 (0)1223 423 306
 E-mail: sales@datapaq.co.uk
 Web: www.datapaq.com

North and South America
 DATAPAQ Inc.,
 187 Ballardvale Street,
 Willmington, MA 01887, USA
 Tel: +1 978 988 9000
 Fax: +1 978 988 0666
 E-mail: sales@datapaq.com
 Web: www.datapaq.com

Germany
 DATAPAQ GmbH,
 Valdorfer Straße 100
 D-32602 Vlotho, Deutschland
 Tel: +49 5733 9107 0
 Fax: +49 5733 9107 27
 E-mail: sales@datapaq.de
 Web: www.datapaq.de



www.datapaq.com

©2011 Datapaq (WicketPaq Rev B) 3/2011
 Datapaq, the Datapaq logo and Oven Tracker
 are registered trademarks of Datapaq.
 Specifications subject to change without notice.