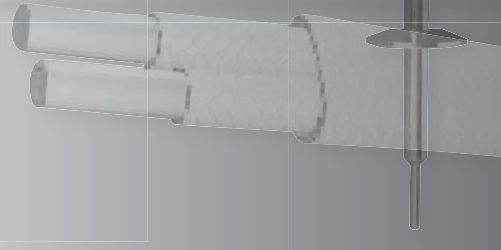


GENERAL CATALOGUE 2010/11



measure



control



record



Tel: 1300 768 887 | Fax: 1300 786 661 | Email: sales@onetemp.com.au

ADELAIDE
136 Richmond Road
Marleston SA 5033
adelsales@onetemp.com.au

BRISBANE
10/1048 Beaudesert Road
Coopers Plain QLD 4108
brisales@onetemp.com.au

MELBOURNE
10/26-30 Howleys Road
Notting Hill Vic 3168
melbsales@onetemp.com.au

SYDNEY
3/30 Cowper Street
Parramatta NSW 2150
sydsales@onetemp.com.au

Is an Australian company that has established an enviable reputation in the field of temperature measurement, control and recording instrumentation. Core to our success over the past 40 years are the following company values.

CORE VALUES

Solution Focus

The right solution every time

Quality

Product range and quality system

Experience

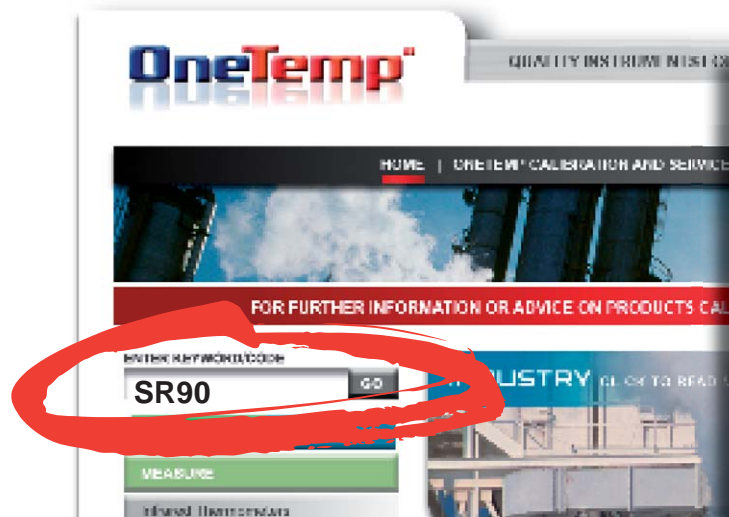
Extensive experience gained from many years in our field

Service Excellence

A strong commitment to customer satisfaction

We take pride in presenting our range of products, carefully sourced from Australia and around the world.

Hand Held instruments	3
Temperature Sensors	4
Temperature Sensors with Connection Heads	5
Thermocouple Connectors and RTD Accessories	6
Thermocouple and RTD Wires and Cables	7
Humidity Transmitters	8
Wireless Temperature Sensors	8
Pressure Transmitters	9
Temperature and Process Controllers	10
Power Regulators	10
Temperature and Process Controllers	11
Temperature and Process Indicators	12
Temperature and Process Recorders	13
Programmable Transmitters	14
Moisture Analysers	15
Moisture in Dry Air and Gas	15
Thermal Profiling - Food	16
Thermal Profiling - Oven	16
Thermal Profiling - Furnace	17
Level Transmitters	17
Data Loggers and Weather Stations	18
Communications	19
Data Acquisition	19
Process Calibrators	20
Gas Analysers	21
Infrared Thermometers Fixed Systems	22
Portable Infrared Thermometers	23
Service	24



Quick find products online
www.onetemp.com.au

Full specifications can be found on our website at www.onetemp.com.au



Digital Thermometer with Dual Input Type K Thermocouple

Search Code: YC-821N

2 x Type K Thermocouple inputs with Dual Display to view both temperatures simultaneously.

- Protection Holster Standard
- Functions: °C/ °F, MAX/MIN, HOLD, REL, MEM, LIMIT, HI/LO, TYPE, T1-T2,
- Memory to save 10 data points that can be recalled.
- K Type: -200°C ~1372°C



Digital Thermometer with Four Thermocouple Inputs and Data Logging Function

Search Code: YC-747UD

- Four Displays. Back Light.
- Selectable for thermocouple types: K/J/T/E/R/S/N
- USB or RS232 interface, optic coupling to instrument.
- Support Vista, XP, ME, 2000, 98 Windows operating systems
- Supplied with PC software which is simple and easy to operate
- Data logging function 10000 Records for each channel.
- Quick read memory data. (50 page/sec)
- Calendar function
- Battery Life: 500/hr (Alkaline Battery)

Thermo/Hygrometer

Search Code: HD100

For Temperature and Humidity Measurements
Supplied with Hand held probe and transport case

Measuring range:

- Humidity: 5 to 95 % RH • Resolution : 0,1 % RH
- Temperature: -20 to +80°C • Resolution: 0,1°C
- Dew point: -40 to +80°C • Resolution: 0,1°C

Functions:

- Hygrometer : Relative humidity, dew point, hold, min/max values
- Thermometer PT100 (included in hygrometry probe): Temperature,
- Hold, min/max values. Choice of units: °C, °F



Anemometers

Search Code: LV100

For air velocity, air flow and temperature
Supplied with vane, transport case and calibration certificate.

Models available:

LV 101 - Ø 14 mm vane

- Air velocity : 0,8 to 25 m/s
- Temperature : -20 to +80°C
- Air flow : 0 to 99999 m³/h

LV 107- Ø 70 mm vane

- Air velocity : 0,3 to 35 m/s
- Temperature: -20 to 80°C

LV 110- Ø 110 mm vane

- Air velocity : 0,25 to 35 m/s
- Air flow: 0 to 99999 m³/h
- Temperature: -20 to +80°C



Hand Held Sensor with Pointed Stab Tip

Search Code: HH-GPPT

For immersion and penetration Temperatures



General Purpose Hand Held Sensor

Search Code: HH-GP

For immersion and air temperatures



Hand Held Sensor, Surface Temperature

Search Code: HH-SLT

A general purpose surface probe with extended stem



Hand Held Sensor, Right Angle Surface Temperature

Search Code: HH-SBLT

A general purpose surface probe with extended stem and right angle sensing tip



Hand Held Sensor, High Temperature Surface

Search Code: HH-SHT

A general purpose surface probe for temperatures up to 800° C



Light Meter LUX/FC

Search Code: LM-101

- Measures light from visible luminaries equipped with fluorescent, metal halide, high-pressure sodium and incandescent sources.
- Measuring intensities of illumination in Lux or Footcandles.



Sound Meter

Search Code: SM-301

- Digital sound level meter SM301 is auto ranging from a wide 30dB to 130dB.
- It has a frequency weighting A and C to respond to human or machine monitoring purposes.



Low Temperature RTD Sensor

Search Code: R-LT

- General Purpose Use
- 6.4 or 3.0mm Diameter 316 Stainless Steel Sheath
- Teflon or PVC Flexible Lead with 75mm tails and ferrules
- PT100 Class "A" element
- Max Temperature 260°C

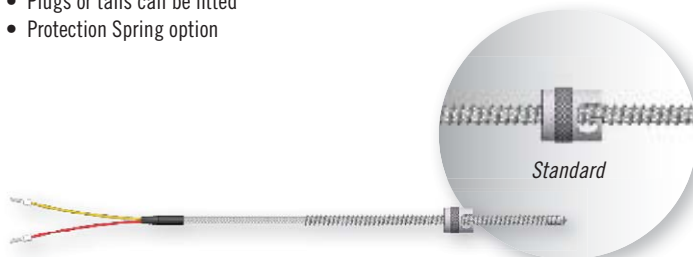


High Temperature RTD Sensor

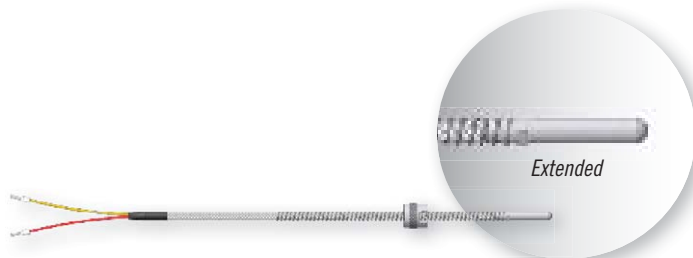
Search Code: RM-ET

Sensor for temperatures up to 400° C and long lead lengths
Normally used for temperatures above 260°C (Max 400°C) or sensors that require long lead lengths and are operating at temperatures over 100°C.

- 310 Stainless Steel Sheath
- Choice of 3.0mm or 6.0mm Sheath Diameter
- Choice of flexible lead types, PVC, Teflon, Fibreglass, Stainless Braid and Stainless speedo cable.
- Plugs or tails can be fitted
- Protection Spring option



Standard



Extended

Plastics Thermocouples

Search Code: T-PL

For plastic injection moulding machines
Spring loaded with bayonet cap to suit standard Bayonet Adaptors.

- High Quality, long lasting Stainless Steel Braided Lead, normally 2 meters
- Type J or K
- Available in Standard or Extended tip styles



Thermocouple Sensor with Flying Leads

Search Code: TM-A

- 75mm flying leads
- Up to 1100°C Continuous use
- Available in 3.0mm or 6.0mm Diameters sheath.
- Type "K" standard, Type T and J made to order
- Standard lengths from 100mm to 600mm, others made to order
- Max 1100°C



Thermocouple Sensor with Leads

Search Code: TM-ET

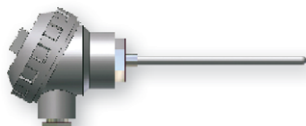
- For most general purpose applications
- Leads in PVC, Teflon, Fibreglass or Stainless steel braid
- Up to 1100°C Continuous use
- Standard or mini plug options
- Available in 3.0mm or 6.0mm Diameters sheath.
- Type "K" standard, Type T and J made to order
- Standard lengths from 100mm to 600mm, others made to order
- Max 1100°C



Thermocouple with a Plug

Search Code: TM-P

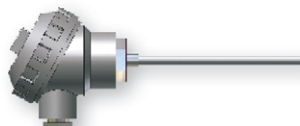
- Available in 3.0mm or 6.0mm diameter sheath.
- Standard lengths from 100mm to 600mm, others made to order
- Standard plug, Mini plug or socket
- Type "K" is standard, type T and J to order
- For General Purpose and Boilers
- Max 1100°C



RTD Sensor with Small Connection head

Search Code: RM-H

- 316 Stainless Steel Sheath
- Class "A" PT100 element
- 6.4mm (¼") Diameter Stem
- Small aluminium connection head IP65
- 3 Wire Ceramic terminal block
- Standard lengths from 100mm to 600mm, others made to order
- Max 260°C



Thermocouple Sensor with Small Connection Head

Search Code: TM-H

- 310 Mineral Insulated Stainless Steel Sheath
- Type "K" is standard, Type J or T also available
- 6.0mm Diameter Stem std, other sizes available
- Small aluminium connection head IP65
- 2 Wire Ceramic terminal block
- Insulated junction
- Max 1100°C



RTD Sensor with Large Aluminium Connection Head

½" BSP Process Connection

Search Code: RM-PH

- 316 Stainless Steel Sheath
- ½" BSP Process Connection thread
- Class "A" PT100 element
- 6.4mm (¼") Diameter Stem
- Large aluminium connection head IP65
- 3 Wire Ceramic terminal block
- Max 260°C

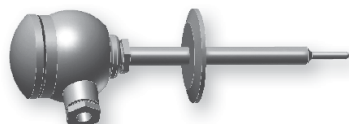


Thermocouple with Large Aluminium Connection Head

½" BSP Process Connection

Search Code: TM-PH

- 310 Stainless Steel Sheath
- ½" BSP Process Connection thread
- Type "K" Standard, type T and J made to order
- 6.0mm Diameter Stem std, other sizes available
- Large aluminium connection head IP65
- 2 Wire Ceramic terminal block
- Optional 4-20mA in head transmitter
- Max 1100°C



RTD Sensor with Triclover flange and Stainless Steel Head for the Food Industry

Search Code: RM-H-Triclover

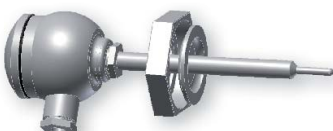
- Supplied with a 12.7mm OD shaft for extra support.
- 30 x 5.5mm OD reduced tip is fitted for faster response.
- Machined and polished 316 Stainless head.
- Bakelite terminal block
- Pt100 Class A RTD element is standard
- All wetted parts are machined and polished for use in food applications



High Temperature Thermocouple Sensor

Search Code: TM-C

- Ceramic Sheath, Max 1800°C
- Connection Head, Aluminium, Cast Iron or Stainless Steel
- Type K, Max 1100°C
- Type R, S Max 1800°C



RTD Sensor with BSM flange and Stainless Steel Head for the Food Industry

Search Code: RM-H-BSM

- Supplied with a 12.7mm OD shaft for extra support.
- 30 x 5.5mm OD reduced tip is fitted for faster response.
- Bakelite terminal block
- Machined and polished 316 Stainless head.
- Pt100 Class A RTD element is standard.
- All wetted parts are machined and polished for use in food applications.



Thermocouple Connector - Standard Plug (Male)

Search Code: **PLUG-STD**

Thermocouple Plug - Standard Size

- Solid Round Pin
- Break and hit proof thermoplastic compound
- Permanent 200°C, short-term up to 250°C
- ANSI Colour
- Stainless steel screws and plates



Thermocouple Connector - Standard Jack (Female)

Search Code: **JACK-STD**

- Break and hit proof thermoplastic compound
- Permanent 200°C, short-term up to 250°C
- ANSI Colour
- Stainless steel screws and plates



Thermocouple Panel Mounted Insert - Standard Size

Search Code: **PANEL-JACK-STD**

- Thermocouple Panel Insert - Standard Size
- Permanent 200°C, short-term up to 250°C
- ANSI Colour
- For round pin standard plugs



Thermocouple Connector - Miniature Plug (Male)

Search Code: **PLUG-MINI**

Thermocouple Plug - Mini Size

- Break and hit proof thermoplastic compound
- Permanent 200°C, short-term up to 250°C
- ANSI Colour
- Stainless steel screws and plates



Thermocouple Connector - Miniature Jack (Female)

Search Code: **JACK-MINI**

Thermocouple Jack - Mini Size

- Permanent 200°C, short-term up to 250°C
- ANSI Colour
- For flat pin plugs



Thermocouple Panel Insert- Miniature

Search Code: **PANEL-JACK-MINI**

- Permanent 200°C, short-term up to 250°C
- ANSI Colour
- Stainless steel screws and plates
- For flat pin mini plugs



PR Electronics Head Mount Signal Transmitters

Search Code: **533**

- RTD Input, PT100, PT1000, Resistance
- Thermocouple input, all types
- 4-20mA Loop powered output
- Standard or Ex versions



Compression Fittings

High Quality Stainless Steel

Search Code: **CFS**

- Various sizes available to suit all sensor stems
- Dual ferrule for secure locking to stem
- Standard thread sizes 1/8" BSP, 1/4" BSP, 1/2" BSP, 3/4" BSP



Flange, 50mm Adjustable

Search Code: **FLANGE-50MM-ADJ**

Ideal for mounting sensors through the side wall of a kiln or oven

- 50mm outer diameter
- Adjustable with locking screw
- 6.4mm hole size
- Made to order sizes also available



Barstock Thermowell

Search Code: **Thermowell**

- High Pressure applications.
- All solid stainless steel.
- To suit TM-PH, RM-PH sensors.



Fabricated Thermowell, Compression Fitting Type (CF)

Search Code: **Thermowell**

- General purpose use
- All stainless steel
- 1/2" BSP Thread



Fabricated Thermowell, Male/Female Type (MF)

Search Code: **Thermowell**

- General purpose use
- All stainless steel
- 1/2" BSP thread
- To suit TM-PH, RM-PH sensors with 1/2" BSP connection thread.



PVC Thermocouple Extension Cable

Search Code: PVC-PVC

- Stranded conductors for flexibility
- Insulation is ANSI colour coded PVC, Rated to 100°C
- Flat twin cable
- Types K, J, T, R, S, N



Teflon Thermocouple Grade Cables

Search Code: Teflon-Cable

- MFA insulated flat twin cable
- Rated to 240°C
- Types K, J, T



PVC Thermocouple Extension Cable with Screen

Search Code: PVC-SCREEN-PVC

- Stranded or solid conductors
- Insulation is ANSI colour coded PVC, Rated to 100°C
- Aluminium polyester screen with drain wire for shielding electrical interference
- round cable
- Types K, J, T, R, S, N



Fibreglass Thermocouple Grade Cable

Search Code: Fibreglass-Cable

- Fibreglass insulated
- Rated to 400 °C std
- High temp version 650°C
- Types K, J, T



PVC Multicore Thermocouple Extension Cable with Screen

Search Code: PVC-Multi-Core

- Stranded or solid conductors
- Insulation is ANSI colour coded PVC, Rated to 100°C
- Aluminium polyester screen with drain wire for shielding electrical interference
- round cable
- Types K, J, T, R, S, N
- Conductors twisted in pairs with printed numbering
- Optional Galvanised Steel Wire Armour or Stainless Steel Braid



Fibreglass Thermocouple Cable with S/S Braid

Search Code: Fibreglass-Braid

- Fibreglass insulated with a stainless steel over braid
- Rated to 400°C std
- High temp version 650°C
- Types K, J, T



PVC 3 Core Screened Cable for RTD Sensors

Search Code: RTD-Screened

- PVC Outer, round
- Two types available with Conductors 7/0.2 and 16/0.2
- Working temperature: -30 + 80°C, max 105°C
- Aluminium polyester screen with drain wire for shielding electrical interference



Ceramic Fibre Thermocouple Cable

Search Code: Ceramic-Fiber

- Ceramic fiber insulated oval cable
- Type "K" Thermocouple Grade
- 1200°C



Wireless Temperature Sensing Solutions

Search Code: Wtrans

- A wireless receiver accepts up to 16 sensors
- MODBUS Communications
- 4 x 4-20mA Outputs
- The Temperature sensors are battery powered so no wiring - *see sensor below*
- works for mobile and stationary wireless temperature sensing applications
- Class A Sensor accuracy
- -30 to 260°C



Wtrans - Wireless Temperature Probe

- 1 x Pt 1000 in 3-wire circuit
- Class A
- 100 - 200mm
- 4, 4.5, or 6mm
- 915 MHz (America, Australia, Canada and New Zealand)
- -30 to +260°C (-22 to +500°F)



NEW! HOB0® ZW Series - Wireless Data Nodes

Search Code: ZW

A family of wireless data nodes that provide centralized monitoring of energy and environmental conditions

HOB0 data nodes transmit high-accuracy, real-time data from dozens of points to a central PC.

- Provides centralized building performance data collection
- Inputs and built in sensors for Temp, RH, 4-20mA, 0-10VDC, Pulse, and more.
- Transmission of real-time data within a self-healing mesh network eliminates line-of-sight issues
- Automatically routes data back to receiver
- Onboard buffer memory helps prevent data loss
- Alarm notification via email or text messages
- Powerful software for organizing and viewing data
- Map deployed data nodes
- Label and group data nodes for easy identification

HUMIDITY TRANSMITTERS



Humidity Sensors

Search Code: HST (for humidistat, switched output)

Search Code: TH100 (for Transmitters, analogue output)

Kimo HST Series Humidistats and TH100 Series Transmitters

- 0-100%RH
- With or without LCD Display
- Relay Output with Adjustable Set Point (HST)
- TH100 measures Temperature and Humidity
- 0-10VDC or 4-20mA Outputs (TH100)
- Relay Output
- Adjustable Set Point



Industrial Duct Mount Humidity Transmitter

Search Code: LPN-H-D

- Industry grade relative humidity and temperature sensing module
- two loop powered 4~20mA output signals, representing 0~100%RH and 0~100°C
- Suitable for mounting in Ducts



Wet / Dry Bulb Humidity Indicator/ Transmitter

Search Code: IN-HWD

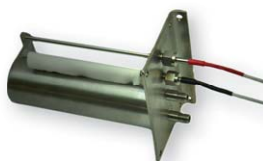
- Independent Temperature and Relative Humidity Outputs
- %RH Accurate to 1.0%
- Temperature Accurate to 0.1%
- Low Cost
- Easy to Install
- Typically used with our WDT-DW wet and dry bulb humidity tank. *See below.*



Industrial Wall Mount Humidity Transmitter

Search Code: LPN-H-W

- Industry grade relative humidity and temperature sensing module
- two loop powered 4~20mA output signals, representing 0~100%RH and 0~100°C
- Suitable for mounting on walls



Wet / Dry Bulb Humidity Tank

Search Code: WDT-DW

- Humidity tank with Wet and Dry sensors.
- For the measurement of Relative Humidity, RH%.
- Constructed of 316 stainless steel.
- Band 5 high accuracy sensors



Pressure Transmitters

Search Code: ECOS

- Economic pressure transmitter suitable for general applications
- Loop Powered 4-20mA or Voltage
- Ranges from -1Bar up to 250Bar
- Stainless Steel wetted parts



Jumo 4390 Vented Level Transmitters

Search Code: Jumo - 4390

The type Jumo level probe is a 2-wire 4~20mA submersible transmitter used for the hydrostatic measurement of levels in liquids. The pressure is converted into an electrical signal which relates to liquid level.

Applications include: level measurement in wells, boreholes, wastewater plant, vessels, and standing or running water.



Manostats

Search Code: PST

500+1000pa to -1000+2000mbar

- Relay Output
- Adjustable Set Point



Differential Pressure Transmitters

Search Code: CP100

- Measuring ranges from 0/+100 Pa to -1000/+2000mbar
- 0-10 V or 4-20mA output
- Power supply 18 to 30 Vdc (2 wires)
- ABS IP 65 housing, with or without display
- Quick and easy mounting with wall-mount plate



Intech Differential Pressure Transmitter

Search Code: LPN-DP

The LPN-DP Series Differential Pressure Transmitters provide a very cost effective solution for pressure applications that require high accuracy over very low operating pressure ranges.

- Very Low Pressure Resolution.
- Fine Zero and Span Adjustment.
- Coarse Zero and Span Adjustment Via Dip Switches.
- 3~15psi Pneumatic P to I using 100kPa Model.
- Temperature Compensation.
- IP67 Enclosure.



Shimaden SR1 Series Controllers, Low Cost OEM

Search Code: SR1

- Low Cost
 - Universal Input
 - 2 Alarm Relay Outputs Standard
 - SSR or Relay Outputs
 - Dust and splash proof front panel
- Note: Min order quantities apply



Shimaden SR90 Series Controllers

Suitable for most general control applications

Search Code: SR90

"Our Best Seller"

- Universal Input
- Large 20mm bright display (SR93)
- 2-output heating and cooling control available
- RS232C or RS485 Interface available
- Dust and splash proof front panel equivalent to IP66
- A wide selection of optional functions
- One Control and two event outputs standard



Shimaden SRS10 Series Advanced Controllers

Feature packed, compact size, with program function.

Search Code: SRS10

- Universal Input
- Small instrument depths (62mm - 65mm)
- 3 Preset SV settings
- 3 Types of PID Function with auto tune
- 2-output heating and cooling control available
- 32 steps Ramp Program Function (1-4 pattern, 32-8 step)
- RS-485 Interface (Master - slave function, Modbus/Shimaden Protocol)
- Heater break/heater loop alarm: Single/3-phase available
- A wide selection of additional functions



Shimaden SR80 Series Controllers Special Application Control

Models SR82, SR83, SR84

Search Code: SR80

Shimaden SR80 series are suitable for applications where higher accuracy control is required.

- High accuracy: $\pm (0.25\% \text{ FS} + 1 \text{ digit})$
- Large 20 mm bright display (SR83 only) Easily read from a long distance
- 2-output heating and cooling control available.
- Auto tuning function for both heating and cooling outputs
- RS232C/RS485 communications.
- Remote Analogue Input

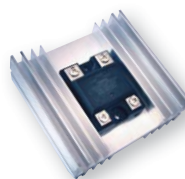
POWER REGULATORS



Single and Three Phase Power Regulators

Search Code: Thyristor

- Multi-input (current, voltage, contact, voltage pulse)
- 20 to 600 Amps
- Phase Angle or Cycle Base Zero Voltage Switching
- Soft Start, Slow Rise, Slow Fall Function



Solid State Relay (SSR)

Search Code: SSR

- KSD240AC8, 4-32VDC Input
- KSA240AC8, 50-250VAC Input
- 50-250VAC, 40Amps switching



Shimaden SR23 Series Advanced High Accuracy Controllers

Search Code: SR23

Advanced control for demanding applications.

- 1 or 2-channel controller
- Independent 2-loop / Internal Cascade / 2-input operation control
- High accuracy $\pm (0.1\% \text{ FS} + 1 \text{ digit})$
- High Sampling Cycle 0.1 sec.
- Easy Setting and Maintenance via Infrared COM port on the front panel



Shimaden FP93 Series, Program Controller

Search Code: FP93

Program controller up to 40 steps, 1, 2 or 4 patterns

- User selectable Thermocouple, RTD, V, mV and Current inputs
- Large 20mm bright display, Readable from a distance and in a low light area
- RS232C or RS485 Interface Standard



Shimaden FP23 Series Advanced Program Controller

Search Code: FP23

Program controller up to 400 steps, 20 patterns.

- 1 or 2-channel controller
- High accuracy $\pm (0.1\% \text{ FS} + 1 \text{ digit})$
- Programmable Max. 400 steps (400 steps x 1 pattern to 20 steps x 20 patterns)
- Max. 10 Zone PID control available
- Easy Setting and Maintenance via Infrared COM port on the front panel
- Interface RS-232C/RS-485 (MODBUS / Shimaden)



Calex PPT245 DIN-Rail Mounted Multifunction Controller

Search Code: PPT245

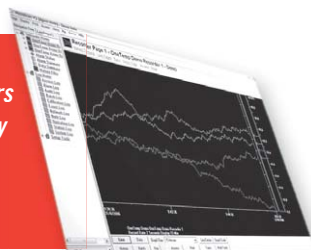
- INPUTS: 1 configurable for T/C K, J, S, R, PT100 (2 ranges), NI100, PT1000, PT500, PTC1K, NTC10K
- 0~10V, 0/4~20mA, 0~40mV, Potentiometers $\leq 6K\Omega$, $\leq 150K\Omega$, TA 50mA
- OUTPUTS: 2 relays 5A resistive + 1 logic SSR 12V-30mA / 4...20mA / 0...10V for control or retransmission
- RS485 Modbus RTU
- Control modes: On/Off, PID + Autotuning, Heating/Cooling PID with neutral zone.
- SUPPLY: 24...230 Vac/dc $\pm 15\%$, 50/60Hz



Shimaden Lite FREE Software for Shimaden Controllers

Search Code: Shimaden-LITE

- Operates with all Shimaden controllers and indicators that have RS232/485/422 communications fitted
- Full controller operation from your PC
- Inbuilt Recording function
- Export data to Excel



Microscan Industrial SCADA and Recording Systems

Search Code: Microscan

- Real Time Trend Recording
- Data Screens
- Live mimic screens (MMI)
- History and Search Screens
- Totalising in engineering units
- Alarms and Events
- Up to 64 stations

All Shimaden controllers will connect seamlessly with Microscan SCADA and Recorder Systems.



Shimaden Indicator

Search Code: SD16

- DIN Size 48 x 96 mm
- $\pm 0.3\%$ High Accuracy Indication
- Large 20 mm bright display
- User selectable Thermocouple, RTD, V, mV and Current inputs
- Alarms, analogue output signals and communication interface (RS232C or RS485) available



Jumbo Display Digital Hygrometer with Memory

Search Code: QM7202

Displays the temperature and humidity together on the one huge LCD display.

- Temperature: -10°C to 60°C / 14°F to 140°F
- Humidity: 10% to 99%
- Min / Max Memory



Data Track T220 Series Universal Input Digital Panel Indicator

Search Code: Data Tracker T220

- Transmitter and transducer power supplies
- Multi relay outputs
- Isolated analogue outputs
- Available with or without front panel buttons
- Frequency, timing, counting, batching, rate



Digital Thermometer for Fridge / Freezer

Search Code: QM7209

- Room temp range -10 to 50°C
- Fridge/freezer temp range -50 to 70°C
- Display size 26(W) x 13(H)mm
- 1m fridge sensor cord
- Requires 1 x AAA battery (supplied)
- Dimensions: 67(W) x 39(H) x 15(D)mm
- Accuracy $\pm 1.0^{\circ}\text{C}$ over full range



Diginorm 75 Multifunction Indicator

Search Code: DGN75

- User selectable universal input including AC Amps and Volts
- 2 or 4 Relay output
- Optional analogue output
- Optional bargraph indication
- Optional RS485 MODBUS



HOB0 LCD Data Logger for Temperature and Humidity

Search Code: U14

The HOB0 U14 LCD Temperature/Relative Humidity (RH) Data Logger displays and records temperature and humidity conditions

- Real-time display of Temperature and RH
- Alarm display and output switch ensure timely notification of out-of-range conditions
- Two models to choose from - internal Temp/RH or external Temp or Temp/RH
- Fast USB downloads to HOB0ware graphing and analysing software
- Keep a traceable proven record of your environmental conditions



4-20mA Loop Powered indicator

Search Code: SD-50X

- 5-digit indicator
- 4-20mA loop powered, no extra power required
- Front panel programming
- simple, step-by-step calibration procedures
- scalable to any engineering unit of measurement
- Depth behind bezel only 15mm



Microscan Data Acquisition Recording Systems

Search Code: Microscan Recorder

Chart Recorder Replacement Packages

- 16 to 1000 Universal Inputs (Analogue or Digital)
- Full historical data retrieval
- Batch recording functionality
- Comprehensive Alarming
- Wireless Solutions



NEW! HOB0® ZW Series - Wireless Data Nodes

Search Code: ZW

A family of wireless data nodes that provide centralized monitoring of energy and environmental conditions

HOB0 data nodes transmit high-accuracy, real-time data from dozens of points to a central PC.

- Provides centralized building performance data collection
- Inputs and built in sensors for Temp, RH, 4-20mA, 0-10VDC, Pulse, and more.
- Transmission of real-time data within a self-healing mesh network eliminates line-of-sight issues
- Automatically routes data back to receiver
- Onboard buffer memory helps prevent data loss
- Alarm notification via email or text messages
- Powerful software for organizing and viewing data
- Map deployed data nodes
- Label and group data nodes for easy identification



Jumo Logoscreen 500 Paperless Recorder

Search Code: logoscreen

- 5-inch high resolution colour
- data can be displayed in a variety of ways, e.g. vertical like a paper recorder
- does not need any chart paper for recording
- Internal memory + CF Card expansion slot
- Data can be analysed on a PC with the evaluation software

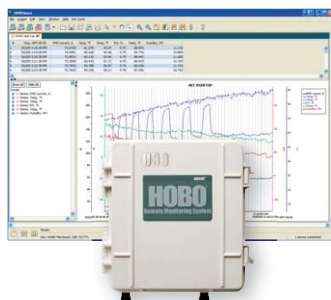


Shimaden Paper Chart Recorder

Search Code: Shimaden SR106

Shimaden Paper Bubble Jet Chart Recorders with Digital display.

- 1 to 12 Channel models
- 100mm SR106 or 180mm SR186
- High-Quality Ink Jet Clear Recording
- Fully Configurable Input



HOB0® U30 - Data Logger with Web Page Operation

Search Code: U30

The HOB0 U30 Remote Monitoring System is a remote data logging and monitoring device with built-in Ethernet, GSM or Wi-Fi communications.

Up to 15 channels of data can be recorded and monitored remotely via HOB0link™.

- Internet access to real-time data
- All electronics are housed within a rugged double-weatherproof, tamper proof enclosure
- Fully-integrated expandable communications
- Set up is quick and easy with plug-and-play sensors
- Optional analogue inputs with sensor excitation
- Includes a relay output that can be activated on user-defined alarm conditions



PR Electronics Transmitters Head Mount RTD and Thermocouple

Search Code: PR Elec

- All 4-20mA Loop powered output
- Selectable Thermocouple Type
- Linear Output

Models:

- 5333 - Universal RTD, PT100, PT1000, Resistance
- 5331 - Universal RTD, Thermocouple, Resistance and mV input
- 5334 - Thermocouple Input
- 5335 - HART Protocol, Universal RTD, Thermocouple, Resistance and mV input
- 5350 - Profibus Protocol, Universal RTD, Thermocouple, Resistance and mV input



XU2 (2 Wire) USB Programmable DIN Rail Transmitter

Search Code: XU2

- Programmable via USB (requires the XU-USB programming key).
- No power supply or calibration required during programming.
- Zero trim pot for in field calibration
- RTD Pt100 and Pt1000.
- Thermocouple B, E, J, K, L, N, R, S, T, mA, mV and V.
- Potentiometer.
- 32 point curve fitter for mA, mV, V inputs.
- Input to Output Isolation 3750Vac.
- High Accuracy 0.1%.



Intech USB Programmable Transmitters Head Mount RTD and Thermocouple

Search Code: XU2H

- Programmable via USB (requires the XU-USB programming key).
- No power supply or calibration required during programming.
- Zero trim pot for in field calibration (XU2H)
- Temperature Input Types:
- RTD Pt100 and Pt1000.
- Thermocouple B, E, J, K, N, R, S, T. (XU2H)
- Output is Linear with Temperature.
- High Accuracy 0.1%.



“NEW” XU4 (4 Wire) USB Programmable - Universal Input Transmitter

Search Code: XU4

- Programmable via USB (requires the XU-USB programming key).
- No power supply or calibration required during programming.
- RTD Pt100 and Pt1000.
- Thermocouple B, E, J, K, N, R, S, T, mA, mV and V.
- Potentiometer.
- Voltage or Current Output
- 32 point curve fitter for mA, mV, V inputs.
- High Accuracy 0.1%.
- Universal AC/DC Power Supply; 85~265Vac or 21~100Vdc.



PR Electronics 4100 Series Universal Transmitter and Trip Amplifiers

Search Code: 4100

- Input RTD, Thermocouple, Ohm, potentiometer, mA and V
- Output current, voltage and 2 relays
- Universal AC or DC supply 21.6~253 VAC or 19.2~300 VDC
- Power supply to power transmitter loops - 16 V
- Clip on front programming / display module



Intech pH Indicating Transmitter

Search Code: LPI-pH

- Bi-Polar pH Cell Input.
- IP67 Rated Enclosure.
- Liquid Crystal Display (LCD) 0~14.00pH.
- High Accuracy.
- Internally Accessible, SLOPE and OFFSET adjustments.
- Temperature Compensation.



Intech Differential Pressure Transmitter

Search Code: LPN-DP

- Very Low Pressure Resolution.
- Fine Zero and Span Adjustment.
- Coarse Zero and Span Adjustment Via Dip Switches.
- 3~15psi Pneumatic P to I using 100kPa Model.
- High Accuracy and Linearity.
- Selectable 5 second Dampening.



Inline Moisture Transmitter

Search Code: MCT-360

The MCT 360 NIR Transmitter is a multiple constituent sensor. It can measure three components simultaneously. For example, it can monitor moisture, coat weight, thickness, etc. from the same transmitter, continuously.

- Three Measurements
- Non Contact Testing
- Pre-Calibrated



Stainless Steel NIR Moisture Gauge for the Food Industry

Search Code: MCT-330-SF

The MCT330SF measures moisture continuously in a food manufacturing environment. The sensor is housed in a robust stainless steel enclosure that can stand up to plant wash down procedures and elevated temperatures. The stainless steel operator interface provides power to the sensor, along with analogue and digital outputs for process control. Additional field bus connections such as Ethernet, Profibus and Device Net are options from the operator interface.



Radio Frequency Hand Held Moisture Sensor

Search Code: HHRF

The new HHRF handheld moisture sensor is a pure dielectric RF moisture gauge using enhanced phase lock referencing on the generated frequency to measure shift in resonant frequency due solely to changes in moisture throughout the sampling volume. Measurement is not influenced by ionic strength.

MOISTURE IN DRY AIR AND GAS



Shaw SDT Dewpoint Transmitter

Search Code: SDT

- The Shaw Moisture Meters Model SDT is a compact, 2 wire, 4-20 mA dewpoint transmitter designed to meet the demands of tough industrial applications.
- The unit is fully self contained within a robust 316 grade stainless steel casing providing weatherproof protection to IP66/NEMA4.
- 4-20mA loop powered



Shaw SADP Moisture

Search Code: SADP

Easily portable, ready for spot checks or continuous use, this battery powered hygrometer indicates both dew point temperatures and water vapour to less than one part per million, on the large meter dial. As the reading is specific to water vapour, calibration is accurate for different gases. Accuracy is guaranteed to better than one part in a million of moisture in very dry air or gas.



Shaw Superdew Meter

Search Code: SDG

Shaw Superdew Meter a versatile hygrometer for moisture in dry air and gas. The SDG has a practical dew point range of -80° c. dew point which is from less than one part per million of water vapour, up to the moisture level in room air.



Datapaq Food Oven Profiling System

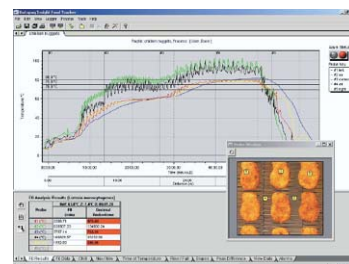
Search Code: Datapaq-Food

Food Tracker, the complete HACCP solution to your cook/chill processes. Food Tracker temperature profiling systems comprise a data logger, a protective thermal barrier and Insight software. Using a Datapaq system you can guarantee the quality and safety of your cooked meats, poultry, bakery products and ready-meals.



Thermal Barriers

Datapaq thermal barriers are rugged, easy to use, and offer the best data logger protection in the world. Thermal barriers come in all shapes and sizes to suit any oven or process, including water resistant, complete submersion, low height and weight and very high temperature furnaces.



Insight Software

Use Insight software to convert raw data into meaningful information about your process, including instant reports on lethality. Document your process for increasing productivity as well as formal documentation such as HACCP. Also available with telemetry for real time monitoring.

THERMAL PROFILING - OVEN



Datapaq Paint and Powder Coatings Oven Profiling System

Search Code: Datapaq-Oven

Reliable and accurate in-process oven temperature profiling for the finishing, paint and powder coating industries.

All Datapaq oven temperature profiling systems are designed to travel through an oven with the product that is being cured, measuring the true product temperature throughout the process.

Thermal Barriers

A comprehensive range of thermal barriers, from low height through to high temperature and long duration. Datapaq thermal barriers can withstand the harshest industrial environments and set the industry standard in reliability.



Oven Tracker Insight Software

Insight analysis software has been developed by Datapaq to meet the needs of the coating and finishing industries. It's a software package based on a novel concept: flexibility. At Datapaq, we believe in offering you choice.

With Insight analysis software you can make it simple for yourself - set up Insight software so that your line operators can print the detailed, certified and traceable profile report you need at just the click of a button. Only you need access the Wizard based set-up screens. cure temperature monitoring software package available.

check text
last sent



Datapaq Furnace Profiling System

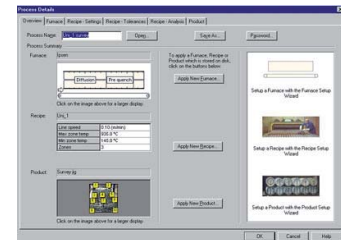
Search Code: Datapaq-Furnace

Accurate surveys in the harshest environments Reliable and accurate in-process temperature surveying for solution heat treating, annealing, brazing, homogenizing, decorating, tempering, forming, frit sealing, normalizing, billet reheating, slab reheating, pressure and vacuum processes and more.



Thermal Barriers

We have the widest range of thermal barriers designed for a variety of furnaces and processes, as well as hostile environments. From a 41mm/1.6" high barrier that can protect for 7 minutes at 600°C/1100°F or a heavyweight that can withstand 800°C/1475°F for 20 hours to barriers that can protect in reheat processes or quenches.



Insight Software for Profile Analysis and Surveying

Insight is the most comprehensive, yet easy-to-use analysis software available for profiling furnaces. Use Insight to analyse your data and see graphically exactly what's happening to your product as it passes through the furnace. For TUS applications the software will supervise the survey, warn of any out of tolerances and print a final report to the latest AMS 2750 requirements.

LEVEL TRANSMITTERS



Princo SmartSonic-2 Ultrasonic Level Transmitter

Search Code: L5660

SmartSonic-2 SMART ultrasonic level transmitters incorporating simple step by-step PC set up and calibration.

- Two-Wire Loop Powered
- Up to 7.6 Meters
- Handheld Calibrator - USB Adaptor
- Rugged PVDF (Kynar) Transducer
- Output 4 to 20ma
- Vessel volume conversion
- PC Calibration Software included by-step PC set up and calibration.



Princo SmartSonic-2 Ultrasonic Level Transmitter

Stock Code: L5666

The SmartSonic-2™ model L-5660-4R 4-wire transmitter for non-contact measurement of level, volume, and/or distance in liquids or solids.

- Range 0.4 - 15.2 Meters
- Self Contained Transmitter
- Works on liquids or solids
- Easy to install
- Output 4 - 20mA + 2 settable trip points
- Programmed via computer interface using the L-5660-4A USB adaptor and included Windows™ compatible software

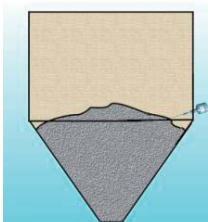


Jumo Submersible Level Transmitters

Search Code: 4390

The type 4390 / 4391 level probe is a 2-wire 4~20mA submersible transmitter used for the hydrostatic measurement of levels in liquids. The pressure is converted into an electrical signal.

Applications include: level measurement in wells, boreholes, wastewater plant, vessels, and standing or running water.



Princo Fly Ash Level Detection Devices

Search Code: Fly Ash

Universal – Wide Range of Point Level Applications – detects the level of powders, granules, conductive or non-conductive liquids ... even the sticky ones.

NULL-KOTE™ Circuitry – Makes the sensor immune to adverse effects from conductive coating build-up.

High Sensitivity and Stability – For critical low response applications.

Designed to Survive – RF immune, vibration-proof, all circuit boards are conformal coated (tropicalized) for extra protection



HOB0® Data Loggers

Search Code: U12

- 12-bit resolution provides high accuracy
- Large memory for long-term deployments or fast sampling
- Flexible measurement options for almost any parameter
- Programmable and push button start



DAQ-PRO 8 Channel Data Logger

Search Code: DAQ-PRO-KIT

- 8 Universal Inputs, Volt, Current, RTD, Thermocouple
- Up to 4000 samples per second
- 512k Memory
- Rechargeable battery
- Log data with or without a PC
- Large graphical display



HOB0 Food Safety Logger Kit

Search Code: Food Safety

- Food-grade 316L stainless Temperature loggers
- High-accuracy, extended temperature range to 125°C
- Suitable for high pressure applications to 2200psi
- Fast readout via direct USB interface
- 125mm stab probe and is suitable for insertion
- Kit comes complete with Logger, Hoboware software and a USB connection cable.



HOB0 Energy Logger

Search Code: energy data logger

- Records up to 15 channels of over a dozen measurements
- Provides 12v excitation for third-party sensors
- Pre-configured smart sensors get you started fast with plug-and-play convenience
- Access your data conveniently via the web
- GSM, Ethernet, Wi-Fi or USB connect ability



HOB0 Weather Stations

Search Code: Weather station data logger

- Internet access to real-time data
- All electronics are housed within a rugged double-weatherproof, tamper proof enclosure
- Fully-integrated expandable communications
- Set up is quick and easy with plug-and-play sensors
- Optional analogue inputs with sensor excitation
- Includes relay that can be activated on user-defined alarm conditions



NEW! HOB0® ZW Series - Wireless Data Nodes

Search Code: ZW-Series

A family of wireless data nodes that provide centralized monitoring of energy and environmental conditions. HOB0 data nodes transmit high-accuracy, real-time data from dozens of points to a central PC.

- Provides centralized building performance data collection
- Inputs and built in sensors for Temp, RH, 4-20mA, 0-10VDC, Pulse, and more.
- Transmission of real-time data within a self-healing mesh network eliminates line-of-sight issues
- Automatically routes data back to receiver
- Onboard buffer memory helps prevent data loss
- Alarm notification via email or text messages
- Powerful software for organizing and viewing data
- Map deployed data nodes
- Label and group data nodes for easy identification



HOB0 Water Level Loggers

Search Code: U20

- Stainless steel housing or Titanium for salt water
- HOB0ware Pro software provides easy conversion to accurate water level reading
- Compensated for barometric pressure, temperature and water density
- Ideal for use in wells, streams, lakes, wetlands and tidal areas
- No-vent-tube design for easy reliable deployment
- Durable ceramic pressure sensor



HOB0 Water Temp Pro Logger

Search Code: U22

- Research-grade measurements at an affordable price
- 12-bit resolution for $\pm 0.2^\circ\text{C}$ accuracy
- Waterproof to 120 meters (400 feet)
- Data readout in less than 30 seconds via fast Optic USB interface
- Durable streamlined case for extended deployment in fresh or salt water
- Optic USB interface for data offload in the field, even when the logger is wet



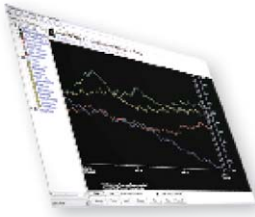
A range of Outdoor Environmental Loggers also available.



Full **onset** catalogue available on www.onetemp.com.au

Microscan Industrial SCADA and Recording Systems

Search Code: Microscan



- Real Time Trends
- Data Screens
- Live mimic screens
- History and Search Screens
- Totalising in engineering units
- Alarms and Events
- Direct connecting to Shimaden controllers and Intech Microstations

Intech Micro Analogue Input Remote Station Intelligent Multiplexer

Search Code: 2100-A16



- 16 Universal Analogue Inputs
- Each Input Individually Selected and Scaled for RTD, T/C, mV, V and mA
- 16 Bit Resolution
- 2 Analogue Outputs
- 4 Digital, Isolated, Optocoupler Inputs
- 2 Digital, Isolated, Relay Outputs
- Ethernet communications optional



HOBOLink Powerful web-based access to HOB0 U30 Remote Monitoring Systems

Search Code: HOBOLink

HOBOLink is a web-enabled software platform designed for HOB0 U30 Remote Monitoring Systems. It allows you to easily access current and historical data, set alarm notifications and relay activations, and manage and control your HOB0 U30 Remote Monitoring Systems.

NEW! HOB0® ZW Series - Wireless Data Nodes

Search Code: ZW



A family of wireless data nodes that provide centralized monitoring of energy and environmental conditions. HOB0 data nodes transmit high-accuracy, real-time data from dozens of points to a central PC.

- Provides centralized building performance data collection
- Inputs and built in sensors for Temp, RH, 4-20mA, 0-10VDC, Pulse, and more.
- Transmission of real-time data within a self-healing mesh network eliminates line-of-sight issues
- Automatically routes data back to receiver
- Onboard buffer memory helps prevent data loss
- Alarm notification via email or text messages
- Powerful software for organizing and viewing data
- Map deployed data nodes
- Label and group data nodes for easy identification

ETHERNET COMMUNICATION MODEMS

Nanostation2 Ethernet to Radio Signal Modems

Search Code: Nanostation



Change Ethernet to a radio signal then back to Ethernet at the other end as if it were a long cable connected.

- Easy to install and setup
- Extend your Ethernet to places you couldn't have before
- Across the street, out to the back shed or up to 20kms away
- Plug and play setup
- Affordable price



Unimax Industrial HSUPA Modem

Search Code: Unimax

- Quad band hspa
- Quad band gsm/gprs/edge
- Supports packet switched data
- 7.2Mbps downlink, 2Mbps uplink
- Ethernet connectivity
- Digital inputs / outputs
- Driven by our intelimax mini pci express module (product code em-770w pci)
- Software development kit available

double check



Martel - BETA Process Calibrator

Search Code: Martel

A range High Accuracy Multi-Function Process Calibrators that are build strong to serve you year after year in the heaviest of industries. The Martel's functions include read and source thermocouples, RTDs, Ohms, current, pressure, frequency, test continuity and a Hart Communicator functionality on some models



Techne Tecal 140F Portable Field Dry Block Calibrator

Search Code: Tecal 140F

The Tecal 140F covers the temperature range of 45°C below ambient to +140°C. The unit includes a multi-well insert, NIST traceable calibration, insert removal tool and industry leading 3 year warranty.



Tecal 1200S High Temperature Portable Calibration Furnace

Search Code: Tecal 1200S

- Wide temperature range up to 1200°C
- Multi-hole insert block for accurate comparison calibration
- Rapid heating rates
- Software available
- Rugged case with carry handle
- Simple to use



Calog-Temp Calibrator

Search Code: CALOG-TEMP

Calog-Temp Multifunction Signal Calibrator

- Small, rugged, handheld with a protective rubber cover
- Trend logging with programmable timebase
- Datalogging to SD card with programmable fields and timers
- USB port for access to logged data
- Measure and source RTD's, Thermocouples, mV, mA
- Lithium Ion battery pack with 'fuel gauge' chip
- Built-in 24V transmitter power supply
- Carry case, charger and test leads supplied as standard



Tecal 650F Portable Field Dry Block Calibrator

Search Code: 650F

The Tecal 650F covers the temperature range of ambient +25°C to +650°C. The unit includes a multi-well insert, NIST traceable calibration, insert removal tool and industry leading 3 year warranty. Fast heat up and cool down and light weight make it an excellent choice for portable field calibrations.



Techne Thermoregulator

Search Code: thermoregulator
For baths code: LCB

- Ranges from -40°C below Amb to 250°C, over 4 models
- Thermoregulators will convert your existing liquid bath or container into a precision temperature controlled bath with exceptional thermal performance
- Selection of stainless steel baths with thermoregulators available in various sizes





IMR 1000 Hand Held Gas Analysers

Search Code: IMR-1000

A compact range of hand held gas analysers ideal for combustion tests on boilers, burners, etc.. with up to three gas sensors. Oxygen O2, Nitricoxide NO, calculates efficiency, excess air, carbon dioxide CO2 and CO free air.



IMR 1400 Industrial Gas Analyser for Boiler, Burner, Engine Analysis

Search Code: IMR-1400

- Measures: CO2 (NDIR), O2, CO, NO, NO2 (SO2); draft/pressure; soot; Flue-gas and ambient temperature
- Calculates: Combustion efficiency, heat losses, excess air, CO corrected
- Comes standard with gas-sampling probe, condensation trap, rugged case, battery, printer, CO-bypass, serial interface, memory, 12VDC



IMR-1400 - IR Gas Analyser, measures CO2 with NDIR Technology

Search Code: IMR-1400-IR

- Measures flue-gases of boilers, burners, engines,...
- High quality combustion gas analyzer using the latest sensor technology
- Includes all needed features for a complete analysis
- Illuminated display with simultaneous display of 8 measured variables
- 7 programmed and 5 programmable fuels



ZG106 Portable or Fixed CO2 Monitor with audible alarms

Search Code: ZG106

ZG106 is low cost portable, accurate handheld CO2 monitor. In addition to measuring the CO2 concentration, this device can also measure the ambient temperature. It uses NDIR technology to improve the long term stability.



PyroCouple Series

General Purpose low cost thermometer

Search Code: PyroCouple

- Temperature range: -20°C to 500°C
- Two-wire 4-20mA output or four-wire voltage/thermocouple output
- Four-wire unit also provides internal sensor temperature
- Field of view: 2:1, 15:1 or 30:1
- Stainless steel housing, sealed to IP65
- Optional air/water cooled housing, air purge collar, laser sighting tool and mounting brackets



PyroSight Series

Search Code: Pyrosight

- Traditional or fibre-optic versions
- Optional laser sighting or aiming light
- Built-in digital display and controls
- Rugged stainless steel enclosure
- Up to 2475°C



PyroUSB Series, Software Programmable

Search Code: Pyro USB

- Configurable temperature range, emissivity setting etc. from a PC via CalexSoft software and USB cable (supplied)
- Temperature range -40 to 1000°C
- Features max; min; average and instantaneous readings; peak or valley hold; reflected energy compensation
- Stainless steel housing, sealed to IP65
- Field of view: 15:1, 30:1 or Close Focus
- 4 to 20mA output
- Quick and easy installation
- Optional air/water cooled housing, air purge collar, laser sighting tool and mounting brackets



Calex PyroCouple M Series, Remote Sensor

Search Code: PyroCouple M

- Miniature sensing head withstands 70°C ambient
- Current, voltage or thermocouple outputs
- Measures temperatures from -20°C to 500°C, accurately and consistently
- Optics 2:1, 15:1 or 30:1
- Rugged IP65 stainless steel sensing head for strength and hygiene
- Optional mounting brackets, laser sighting tool and air purge collar



Landmark Graphic Signal Processor

Search Code: Landmark Graphic

LANDMARK® GRAPHIC is a high precision, multi function, intelligent infrared thermometer signal processor with graphical display. Two versions are available: a single channel and a multiple channel processor.

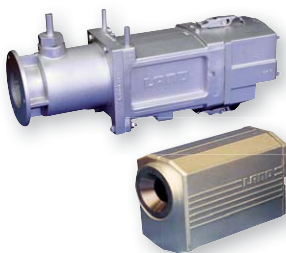


Land SoloNet infrared Thermometers

Search Code: SOLOnet

The new generation of intelligent, high precision digital infrared thermometers.

There are four different thermometer types with choice of operating wavelength, optical variants, laser alignment and measurement ranges to suit the chosen application within the operating range 200 to 1750°C/392 to 3182°F.



Land System 4 Infrared Thermometers

Search Code: System 4

- Fully interchangeable thermometer and processors ensure maximum flexibility without the need for recalibration.
- Wide range of thermometers with focusable, through-the-lens sighting or flexible fiberoptics with optional laser targeting.
- Small target capability
- Wide range of highly effective mounting accessories
- Rugged, flexible, modular design
- Accurate, reliable, drift-free measurement
- Industry standard outputs to suit any process monitoring, recording or control system



ThermaTwin Infrared Thermometer

Low Cost General Purpose Infrared Thermometer

Search Code: TN408

The Infrared Laser Thermometer up to 500°C is a professional laser thermometer with advanced temperature processing. It also has a built-in socket that accepts commercially available K-type thermocouple (not included).



ThermaTwin HACCP Food Thermometer Infrared + Probe

Search Code: TCT303F

ThermaTwin TCT303F Infrared Thermometer with built in immersion Probe

- HACCP for Food applications
- Green and red safe lights for below 4°C and above 60°C
- Range IR -55 to 250°C, Probe -55 to 330°C



ThermaTwin TN425LCE Infrared Thermometer

Search Code: TN425LCE

- High Temperature Infrared Thermometer
- Range -60 to 1000°C
- Dual Laser for accurate spot targeting
- 50:1 Optics, (small target spot size)
- Also accepts type "K" thermocouple input
- Comes complete with carry case



Land Cyclops C100 for General Purpose

Search Code: Cyclops 100

Cyclops 100(B) is a general purpose, high temperature, portable infrared thermometer, designed for accurate measurement of temperatures in the range 550 to 3000°C.



Land Cyclops C055 Meltmaster

for Temperature Measurement of Liquid Metals

Search Code: Cyclops 055 Meltmaster

Cyclops 055 Meltmaster is a dedicated high precision, portable infrared thermometer, designed for accurate measurement of liquid metal temperatures in the range 1000 to 2000°C



PTI-170L Series High Resolution Thermal Imaging Camera

Search Code: PTI-170

A valuable tool designed for maintenance professionals, service and electrical/mechanical inspection thermographers, building inspectors, energy conservation specialists and plant/facility managers to identify hidden problems in manufacturing processes.



OneTemp have a fully equipped instrument workshop located at our Melbourne office.

We specialise in:

- Calibration of Infrared Thermometers both portable and fixed systems. (-10°C to 1450°C)
- Calibration of Thermocouples and RTD temperature sensors. (-20°C to 1150°C)
- Humidity Calibration.
- Repairs of all industrial instrumentation including infrared thermometers.
- On site repairs and calibration can be arranged, (All States).
- Turn key projects, design, supply, install and commission.
- Phone support for all products sold, feel free to call us if you have any questions.

Through the years, we have built an enviable foundation in being a solution focused company with a strong commitment to service excellence. Our quality assurance is backed by a highly trained after sales care team in each office and the OneTemp Service and Calibration Centre.

About OneTemp

We take pride in providing the best solutions with our range of quality products that have been carefully selected from amongst the world's best. With over 40 years of experience we offer an extensive choice in measuring, controlling and recording instruments for industrial and research applications.



BRANDS REPRESENTED

onset[®]

KIMO[®]

SHIMADEN

LAND
instruments international

prince

MARTEL ELECTRONICS

TECHNE

PROCESS SENSORS
CORPORATION

PRelectronics

Intech INSTRUMENTS LTD

SHAW

TexmateNZ
intelligent control

Data Track
PROCESS INSTRUMENT

SICCE

CALEX
ELECTRONICS LIMITED

DATAPAQ

maxon
australia.

JUMO