

NOVA SERIES

MCT460-T

TOBACCO MOISTURE TRANSMITTER

The Innovative New NOVA Series

The **MCT460-T** measures moisture, the most critical variable in a tobacco processing plant. The MCT 460-T provides accurate, reliable and stable outputs for measurement and control. The MCT 460-T can also be configured to continuously monitor tobacco temperature. Delivered pre-calibrated and with a comprehensive 2-year warranty, the MCT460-T is simple to install and may be used at any stage of tobacco processing.

Specifications: MCT460 NIR Transmitter

Measurement Range: _____ 0 - 60%
 Measurement Accuracy: _____ +/- 0.1 to 0.5%
 Repeatability: _____ +/- 0.10%
 Product Distance: _____ 8-18 inches (200-450mm)
 Calibration Codes: _____ 100
 Response Time: _____ 1-999 seconds. Three modes available
 Damping, integration and gated.
 Power: _____ 90-260VAC, 50/60 Hz, 40 watts
 Outputs: _____ 4-20mA, 0-10V (isolated), RS-232 & RS485
 Weight: _____ 19 lbs. (8.6kg)
 Ambient Temperature: _____ 0-50 °C (32-120°F) with water
 or air cooling up to 80°C (160°F)
 Enclosure: _____ IP67, Cast Aluminum
 Window Purge: _____ Airpurge Diffuser

Specifications: Operator Interface

Display: _____ 5.7 inch Color Touchscreen LCD
 Languages: _____ User Selectable
 Power: _____ From MCT460-T Sensor or Local
 Cable: _____ 10 ft (3 meters) standard
 Enclosure: _____ Cast Aluminum

Maintenance:

Warranty: _____ 24 months Parts/Labor
 Routine Cleaning: _____ None Required
 Calibration Verification: _____ Calibration Check Standard
 Cooling _____ Vortex Air Cooler (optional)

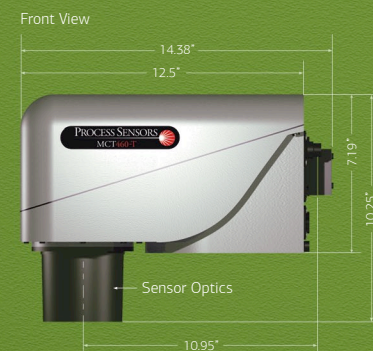
CE Compliance:

EMC Directives EN50081-1 & EN50082-2, EN61010-1
 Low Voltage Directive

Databus & Software Interfaces:

Optional Bus Interfaces: _____ ProfiNet, ProfiBus, Ethernet IP
 Modbus TCP, DeviceNet
 Software: _____ Window-based Stand-alone Program
 or OPC-DDE Server

Dimensions: MCT460-T



Operator Interface



HEADQUARTERS

United States

Process Sensors Corporation
 113 Cedar St.
 Milford, MA 01757 USA
 Tel: (508) 473-9901
 Fax: (508) 473-0715
 info@processsensors.com

Europe

Process Sensors Europe
 Unit 4, Adelaide House
 Corbygate Business Park
 Corby, Northants NN17 5JG UK
 Tel: 01536 408066
 Fax: 01536 407813
 infouk@processsensors.com

Eastern Europe

Process Sensors Polska
 ul. Erazma z Zakroczymia 12 lokal 2
 03-185 Warszawa
 Tel: (48) 22 6739526
 Fax: (48) 22 6739527
 Gsm: (48) 509 202759
 tomasz@processsensors.com

ASIA - Process Sensors Asia

PT 2328 Pinggiran Golf
 Kemumin, Pengkalan Chepa
 Kota Bharu, Kelantan 16100
 Malaysia
 T: 011 60 17620-2806
 Fx: 011 60 6601 4588
 hussin@processsensors.com

For more information on Process Sensors products,
 visit our website at:

www.processsensors.com

PROCESS SENSORS
 CORPORATION

NOVA SERIES

MCT460-T

TOBACCO MOISTURE TRANSMITTER

Online NIR Transmitter for Continuous Real-Time Measurement
 and Control in Tobacco Processing

PROCESS SENSORS
 CORPORATION

OneTemp[®] Pty Ltd
 MEASURE | CONTROL | RECORD
 www.onetemp.com.au
 1300 768 887



NOVA SERIES MCT460-T

Tobacco Moisture Transmitter

MCT460-T Improvements

- Processing electronics upgraded and optimized to improve sensor performance and flexibility
- New micro controller, high performance, dual core architecture. One core dedicated to NIR signal acquisition, the other programmed to manage computations and communications options
- Samples entire NIR signal train for increased measurement accuracy
- USB connectivity
- Embedded bootloader allows sensor firmware to be upgraded through USB or serial interface
- Filter wheel speed adjustment through software
- Improved PbS detector temperature control for enhanced stability in arduous environments
- Built in data logger for measured constituents and sensor diagnostics
- IP67 cast aluminum enclosure

Nova Series

Reliable, Proven, Flexible Design

Smart Sensor Technology - The MCT460-T is a true stand-alone NIR Transmitter in a IP67 cast aluminum enclosure. A single, proprietary circuit board drives the measurement along with all analog and digital communication. Includes 4-20 mA, 0-10 volts, RS-232/485 or network interfaces such as Ethernet, Profibus, etc. There is no requirement for any intermediary electronics.

MCT 460-T System - The MCT460-T can be configured to connect directly to an Operator Interface. The Operator Interface will power the MCT 460-T Transmitter. All analog, digital and field bus information is generated by the operator interface.

Wide Spectrum Referencing - The MCT460-T incorporates a unique reference filter to monitor the tobacco reflectance properties across the complete near infrared (NIR) spectrum. The filter minimizes the influence of tobacco color, blend or type on the Transmitter's reading.

Measurement Speed - A proven, reliable high speed filter wheel assembly is combined with a state-of-the-art proprietary single detector optical system. This fast sampling technique reduces measurement noise and produces an accurate and repeatable on-line signal. The filter wheel speed is optimized and adjustable through software.

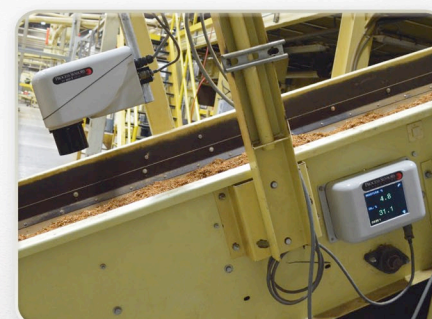
Product Temperature Monitor - The MCT460-T can be configured to monitor and display tobacco temperature in Fahrenheit or Centigrade. The temperature sensor is contained in the MCT460-T enclosure. No additional hardware or wiring is required.

Cooling Panel & Air Purge - Included as a standard part of the MCT460-T

Accurate, Reliable and Stable Moisture Measurement for all Tobacco Processing Applications

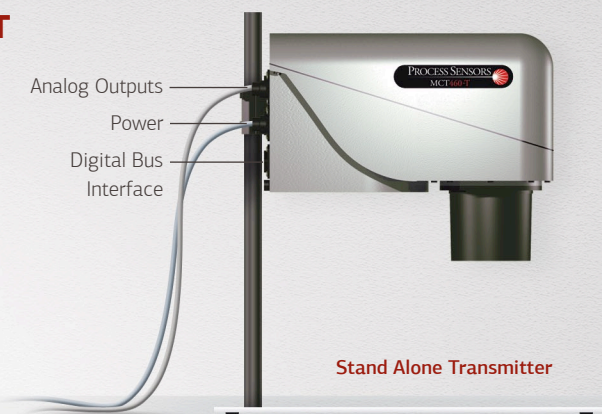
The **MCT460-T** is simple to install and may be used at any stage of tobacco processing, with all types of tobacco applications, including:

- | | | |
|-----------------|-----------------|------------------------------|
| • Whole Leaf | • Reconstituted | • Finished Cigarette Tobacco |
| • Whole Stems | • CRS | • Pipe Tobacco |
| • Cut Stems | • Expanded | • Cased Burley |
| • Lamina Strips | • Cigar Filler | • DIET |
| • Cut Lamina | • Chewing | • Snuff |



Stand Alone MCT460-T Configuration

- Connects directly to PLC
- No Operator Interface required
- Powered at the MCT460 Transmitter
- All Analog Outputs, Digital and Bus interfaces directly from the Transmitter
- 5.7" Operator Interface/Display (optional)



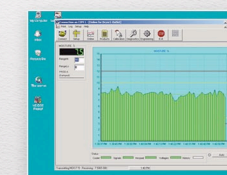
System MCT460-T Configuration

- Transmitter connects to Operator Interface
- Transmitter powered from Operator Interface
- All Analog Outputs, Digital and Bus interfaces from Operator Interface
- Large 5.7" high resolution Touchscreen



Computer Software

Process Sensors Corporation (PSC) Viewer Software is a proprietary Windows-based package. It monitors all MCT460-T functions and allows an operator to insert set-up parameters, perform or adjust calibrations, select product codes, examine internal diagnostic values and view trends of moisture and temperature.



OneTemp^o pty ltd
MEASURE | CONTROL | RECORD
www.onetemp.com.au
1300 768 887

PROCESS SENSORS
CORPORATION

For more information on Process Sensors instruments and accessories, visit our website at: www.processsensors.com